



SHAPING
OUR FUTURE

Cornwall and the Isles of Scilly
Health and Social Care Partnership

Welcome

Fowey area and Fowey Hospital

3 June

Fowey area and Fowey Hospital

Workshop 2: About today



SHAPING
OUR FUTURE

Cornwall and the Isles of Scilly
Health and Social Care Partnership

9.45–10.00

Registration and refreshments

10.00–11.00

Large group discussion:
A recap from workshop 1 and a review of
the care home working idea

11.00–11.15

Break/refreshments

11.15–11.35

Large group discussion: review of working
ideas

11.35–11.50

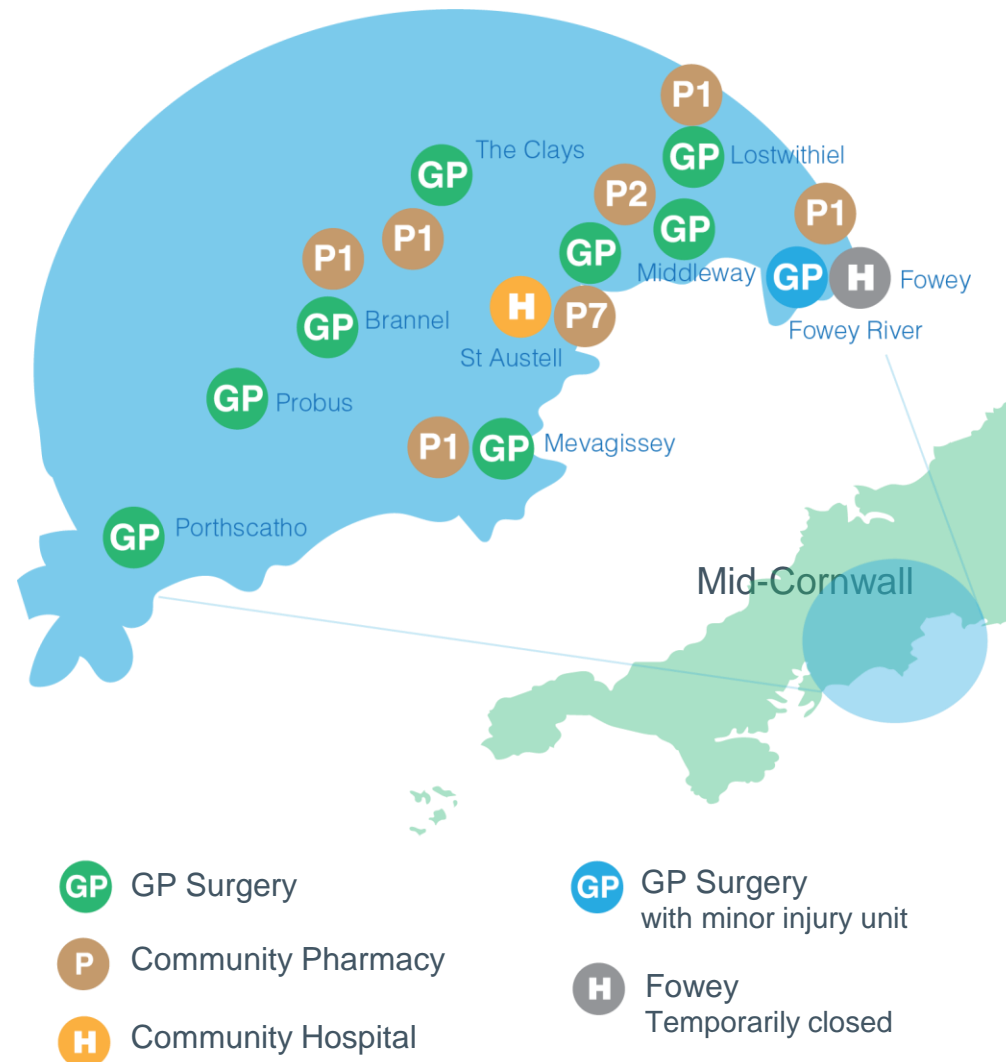
Conclusions and review of discussion
points. Any questions?

11.50–12.00

What next?

12.00pm

End and completion of evaluation forms.



Fowey area and Fowey Hospital

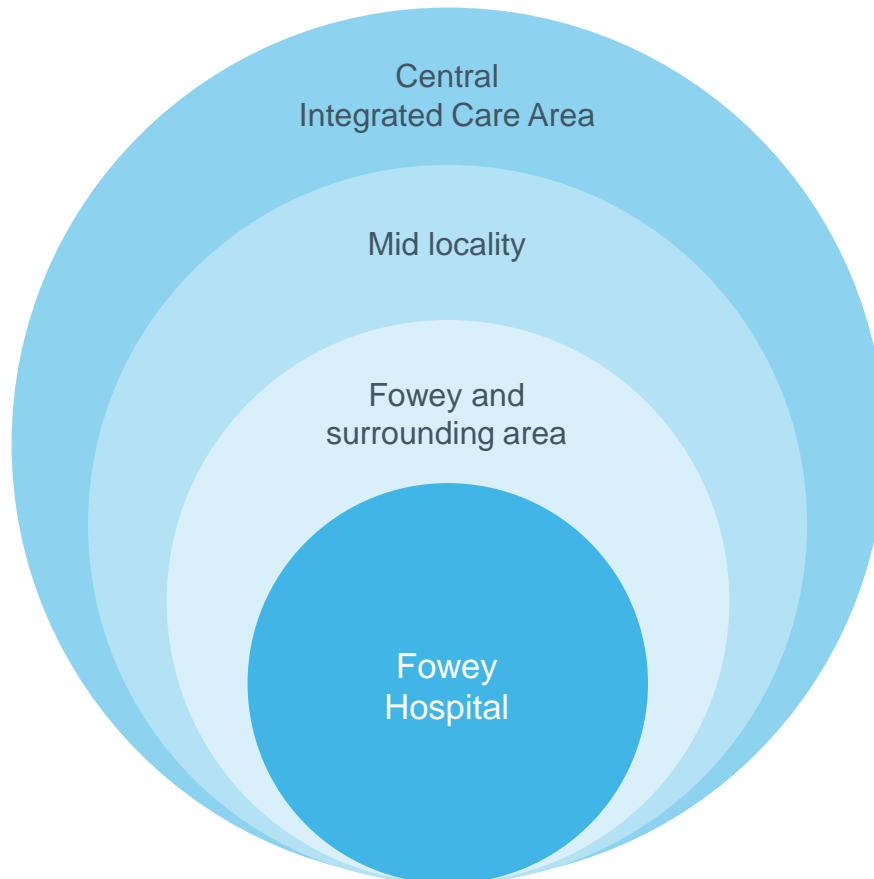
A recap from workshop one



SHAPING
OUR FUTURE

Cornwall and the Isles of Scilly
Health and Social Care Partnership

The context for our focus and
what we discussed last time



Needs

What are our community needs
and what is important to us?

Services & Support

What are our key challenges in
supporting communities and
individuals to thrive?

'Working ideas' for local strategy/Fowey Hospital function

What do we need to change to
provide local care and support
services that are fit for the future?

Fowey area and Fowey Hospital

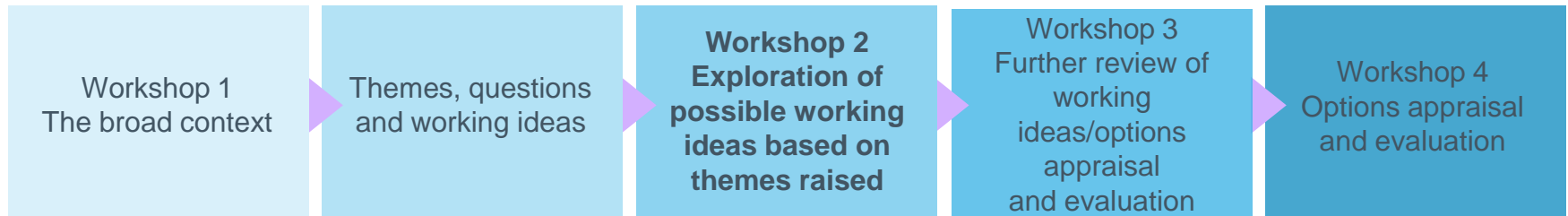
A recap from workshop one



SHAPING
OUR FUTURE

Cornwall and the Isles of Scilly
Health and Social Care Partnership

The flow of our conversations...



Information gained through the workshops will inform all
local work that is currently underway at a variety of
levels...

Health, social care, education, children's,
housing, planning, transport.

Fowey area and Fowey Hospital

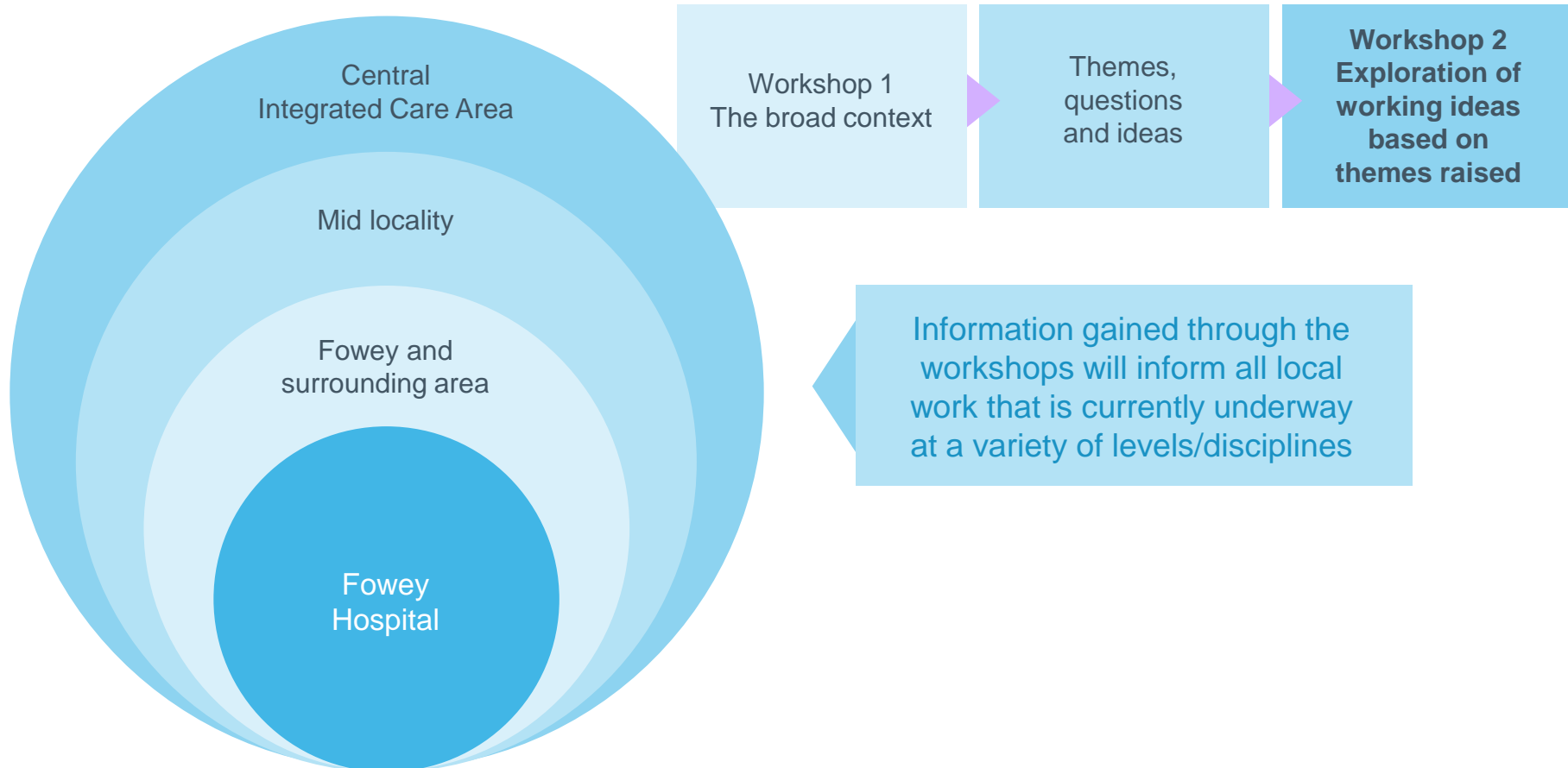
A recap from workshop one



SHAPING
OUR FUTURE

Cornwall and the Isles of Scilly
Health and Social Care Partnership

The flow of our conversations...



Fowey area and Fowey Hospital

Workshop one



SHAPING
OUR FUTURE

Cornwall and the Isles of Scilly
Health and Social Care Partnership

We think we heard themes emerging...

Local context

- * Seasonal trends in demand
- * Focus on prevention and promoting healthy lifestyles – all ages
 - * Step up/step down rehab/reablement care
 - * 7 day working
- * Transport considerations
- * End of life care

Environment

- * Houses in Fowey difficult to adapt
- * Mixed socio-economic contexts
- * Rural and coastal challenges
- * Parking and cost of housing
- * Focus on Fowey GP catchment area only

Enhance community offer

- * Local 'hubs', volunteers, social prescribing
- * Make the best use of existing local resources/connections
 - * Extended GP 'offer'
- * Keep people out of hospital where possible

Workforce

- * Sickness, recruitment, retention and retirement challenges
 - * Caring profession has competition from tourism
- * Need to maintain level of skill/expertise

Provision gaps

- * No extra care housing beds or care home in Fowey
- * Limited care at home support
 - * Limited respite care

Fowey Hospital

- * Not fit for modern inpatient healthcare
- * Small use of minor injuries unit
- * Site not large enough for extra care housing
- * Potential for alternative use? – care home/staff co-location
- * Previous difficulties staffing the hospital
 - * Wish to safeguard site (Draft Neighbourhood Development Plan)

Fowey area and Fowey Hospital

Workshop one



SHAPING
OUR FUTURE

Cornwall and the Isles of Scilly
Health and Social Care Partnership

We think we heard last time...

Themes

- Your views on local context, environment, community resources, workforce, service provision, Fowey Hospital future

Principles

- Local to Fowey area
- Focus on prevention, healthy lifestyles, rehab/reablement, community resilience/networks-services not buildings
- Engagement process to proceed at the right pace for quality and outcomes
- Provide a decision for the future of Fowey Hospital

Working ideas for options

- Fowey Hospital disposed of: site retained for health and care use (various options)
- Fowey Hospital retained (various options for use)
- Fowey Hospital site disposed off, alternative site found for health and social care function (various options)
- Enhancement of community services (various options)
- Combination of above
- Other

Fowey area and Fowey Hospital

We think we heard: Working ideas/options



SHAPING
OUR FUTURE

Cornwall and the Isles of Scilly
Health and Social Care Partnership

Fowey Hospital disposed of: site retained for health and care use
(various working ideas/options)

- **Care home (nursing-with or without staff accommodation)-we will focus on exploring this in workshop 2**
- Sheltered housing
- Extra care housing
- New build facility
- 'Hub'/'one stop shop'
- Other

Fowey area and Fowey Hospital

We think we heard: Working ideas/options



SHAPING
OUR FUTURE

Cornwall and the Isles of Scilly
Health and Social Care Partnership

Fowey Hospital retained (various working ideas/options)

- Co-location of staff
- Community centre/'Hub'/'One-stop shop
- Outpatient clinics
- Other

Fowey area and Fowey Hospital

We think we heard: Working ideas/options



SHAPING
OUR FUTURE

Cornwall and the Isles of Scilly
Health and Social Care Partnership

Fowey Hospital site disposed of: alternative site found for health and social-care function (various working ideas/options)

- Care home (nursing)
- Sheltered housing
- Extra care housing
- New build facility
- Co-location of staff
- Community centre/'hub'
- Outpatient clinics
- Combination of above
- Other



Enhancement of community services (various working ideas/options)

- Extended GP 'offer'
- Social prescribing
- Rehabilitation/reablement community resources
- Mobile 'hubs'
- Maximising connections across existing services/support
- Combination of above
- Other

Fowey area and Fowey Hospital

Fowey Hospital: Key facts



SHAPING
OUR FUTURE

Cornwall and the Isles of Scilly
Health and Social Care Partnership

KEY FACTS	IMPLICATIONS	WORKING IDEAS / OPTIONS
NHS Property Services (NHS PS) own the building	The local NHS does not own the building as an asset.	<p>Care Home?</p> <p>Various other working ideas/options....</p>
Cornwall Partnership NHS Foundation Trust (CFT) own some of the adjoining land	This means that any sale of the building may need to link with sale of the land to increase the footprint available	
CFT lease the premises from NHS PS to deliver services	CFT does therefore not own the asset	
The site is currently void and empty		
Backlog maintenance at 2016 was £750,000 (food hygiene/safety)	Maintenance costs will vary depending on the use of the site	
The building has no listings or covenants	This means there are no restrictions regarding future use, selling, extensions	



Cornwall
Partnership NHS
Foundation Trust as
provider:

- Feasibility study completed: 30 beds, 3 flats, 7 car parking spaces
- Strategic outline proposal completed



What steps are
required for
implementation?

Fowey area and Fowey Hospital

Care home (nursing) working idea/option:



SHAPING
OUR FUTURE

Cornwall and the Isles of Scilly
Health and Social Care Partnership

Hypothetically, what steps would we need to take if there was a local clinical need identified for a nursing home in the area?

1

- Fowey hospital site deemed surplus to NHS requirements (to deliver inpatient and minor injury unit provision) to allow sale of site

2

- Population need evidenced for nursing home and sufficient demand identified

3

- NHS Property Services (Landlord) to: 1) agree to sell on open market or 2) to transfer site to CFT (if current legislation allows) (NB: Some of the surrounding land is owned by CFT so there is a requirement for CFT/NHS PS to work together to sell/transfer building and land)

4

- A provider would need to be successful in purchasing the site (+/- the land that CFT own) from NHS Property Services

5

- Planning permission would need to be granted

Fowey area and Fowey Hospital

Care home (nursing) working idea/option:



SHAPING
OUR FUTURE

Cornwall and the Isles of Scilly
Health and Social Care Partnership

Further steps to take

6

- Provider to build the facility and choose whether to deliver directly or contract out the service. Funding model needs to be identified to make a viable business model for the new provider and affordable for the system.

7

- Successful local or national capital funding bid may be required for the purchase of the site and building works. Exact build costs unknown. Build costs are estimated to be comparatively high, approx. £8-12m

8

- The new provider would need to acquire the required registrations with the regulatory bodies to deliver nursing home care and enter into a commissioning arrangement with Cornwall Council and NHS Kernow.

9

- Sufficient recruitment of suitable workforce required to operate a nursing home.

NB: Representatives from St Ives Town Council State a NHS funded and delivered nursing home would be their preferred model of provision.

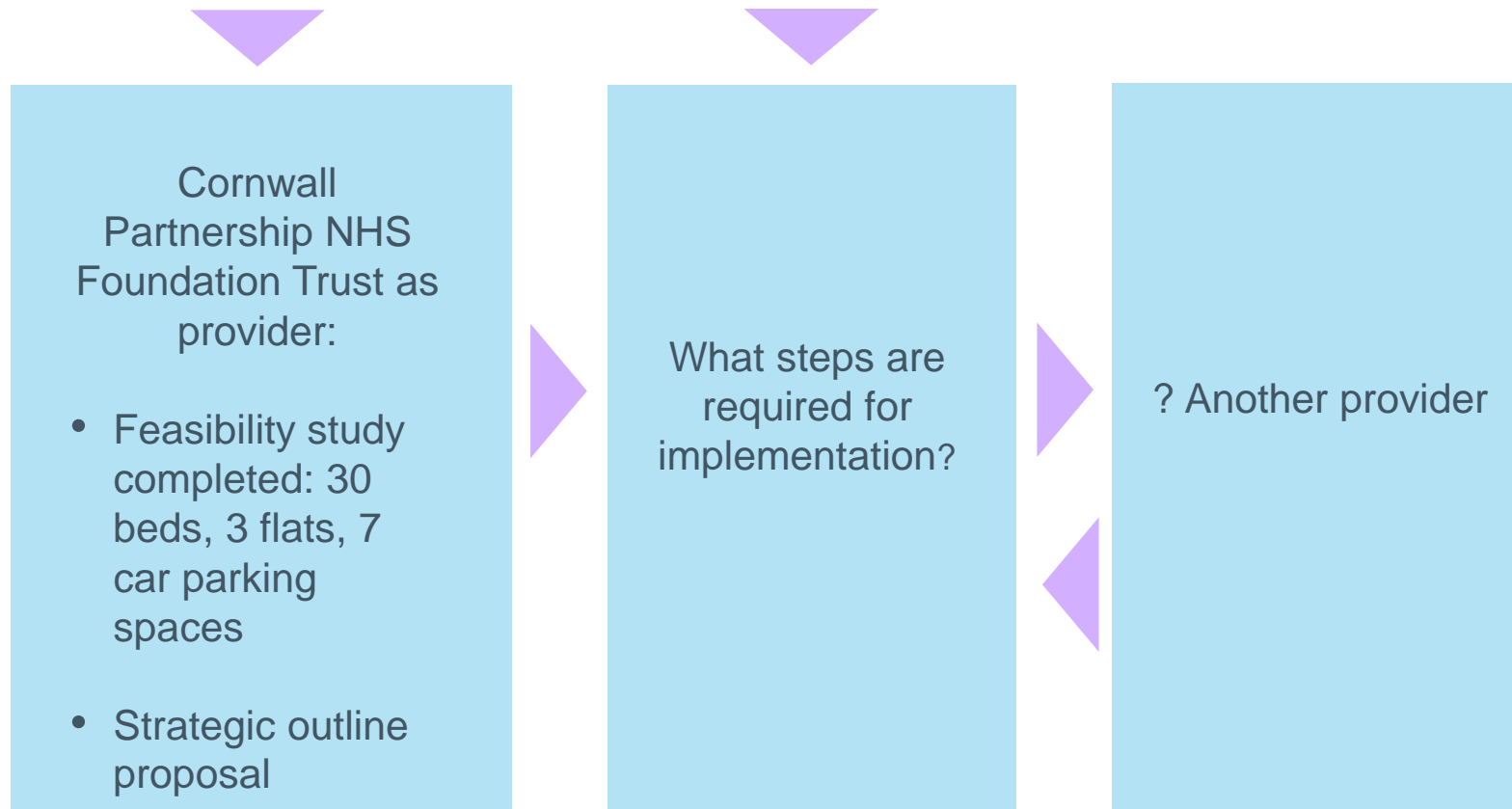
Fowey area and Fowey Hospital

Working idea/Option: Care home (nursing)



SHAPING
OUR FUTURE

Cornwall and the Isles of Scilly
Health and Social Care Partnership



NB: Representatives from St Ives Town Council State a NHS funded and delivered nursing home would be their preferred model of provision.

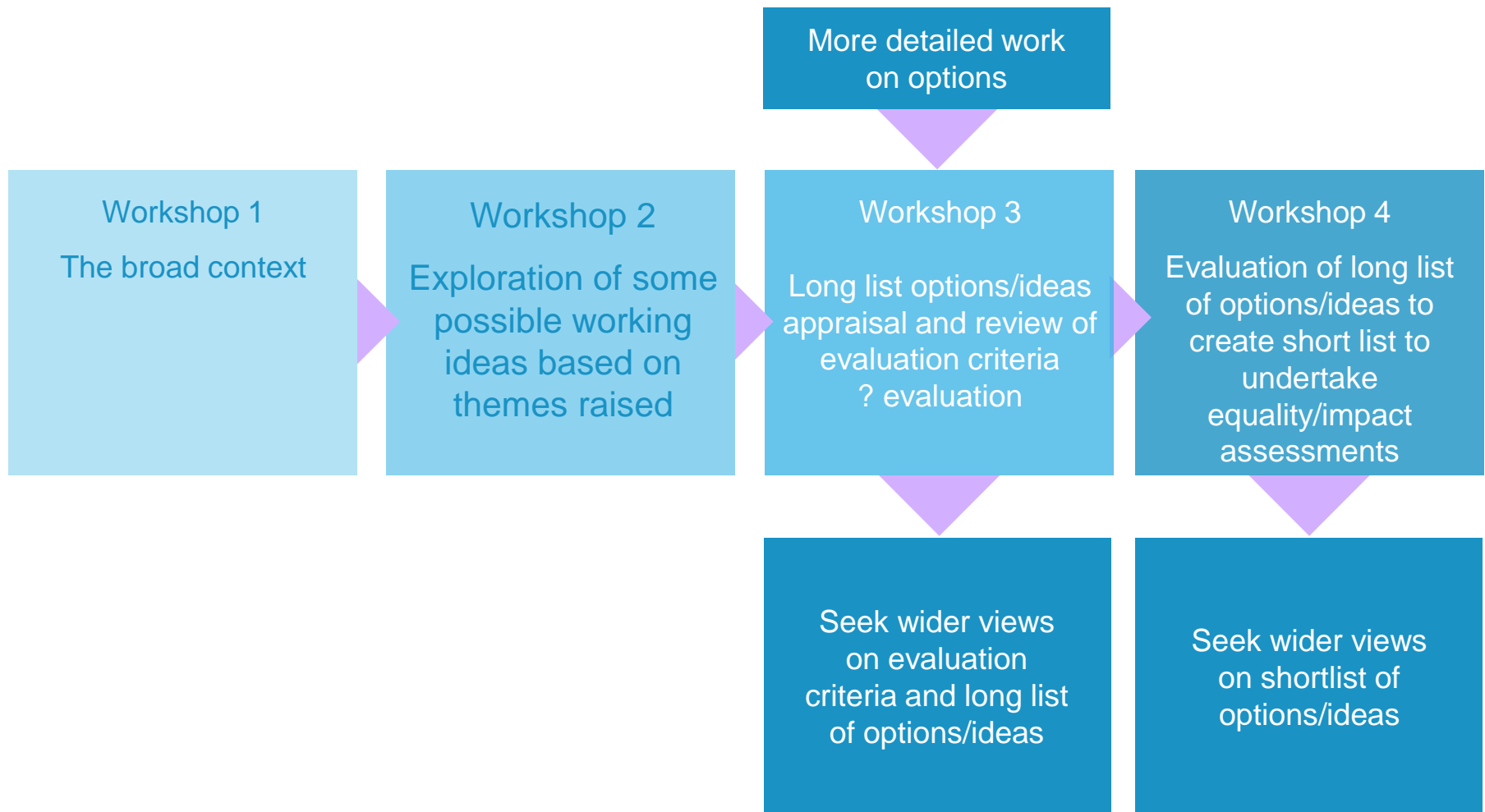
Fowey area and Fowey Hospital

Next steps...



SHAPING
OUR FUTURE

Cornwall and the Isles of Scilly
Health and Social Care Partnership



Fowey area and Fowey Hospital

Setting the evaluation criteria



SHAPING
OUR FUTURE

Cornwall and the Isles of Scilly
Health and Social Care Partnership

Nominated membership so far

ORGANISATION	ROLE	AREA COVERED
NHS Kernow	Community hospital project manager	Countywide
NHS Kernow	Quality manager	East
NHS Kernow	Lay member Governing Body	Countywide
NHS Kernow	Deputy director of corporate governance	Countywide
Cornwall Council	Senior primary care development manager	Countywide
Cornwall Council	Cornwall councillor	West
Cornwall Council	Principal Social Worker	West
Cornwall Council	Family Hub Co-ordinator	West
Cornwall Council	Cornwall councillor	West
Cornwall Council	Cornwall councillor	East
Public Health	Consultant in public health (children)	Countywide
disAbility Cornwall and Isles of Scilly	Representative	Countywide
Cornwall Hospice Care	Specialist nurse	Countywide
Cornwall Partnership NHS Foundation Trust	Professional lead for physiotherapy	Countywide
Cornwall Partnership NHS Foundation Trust	Professional lead for occupational therapy	Countywide
Cornwall Partnership NHS Foundation Trust	Programme Manager	Countywide
Cornwall Partnership NHS Foundation Trust	Quality lead	Countywide
Cornwall Partnership NHS Foundation Trust	Shaping our future clinical lead, primary care medical director	Countywide
Healthwatch Cornwall	Representative	Countywide
Penwith Dementia Friendly Communities	Chairman	West



SHAPING
OUR FUTURE

Cornwall and the Isles of Scilly
Health and Social Care Partnership

Thank you.