



SHAPING
OUR FUTURE

Cornwall and the Isles of Scilly
Health and Social Care Partnership

Welcome

Fowey

About today

Thank you for working with us to improve health and care services in Fowey.

10.00–10.20 : About today, and why we're here.

10.20–10.40 : First small table discussion.

10.40–11.00 : Second small table discussion.

11.00–11.15 : Break/refreshments

11.15–11.35 : Third small table discussion.

11.35–11:50 : Conclusions and review of discussion points.

11.50–12.00 : What next?

12.00 noon : End.

Any questions?



Our vision for health and care services

Why are we here?



SHAPING
OUR FUTURE

Cornwall and the Isles of Scilly
Health and Social Care Partnership

The areas we're focusing on.

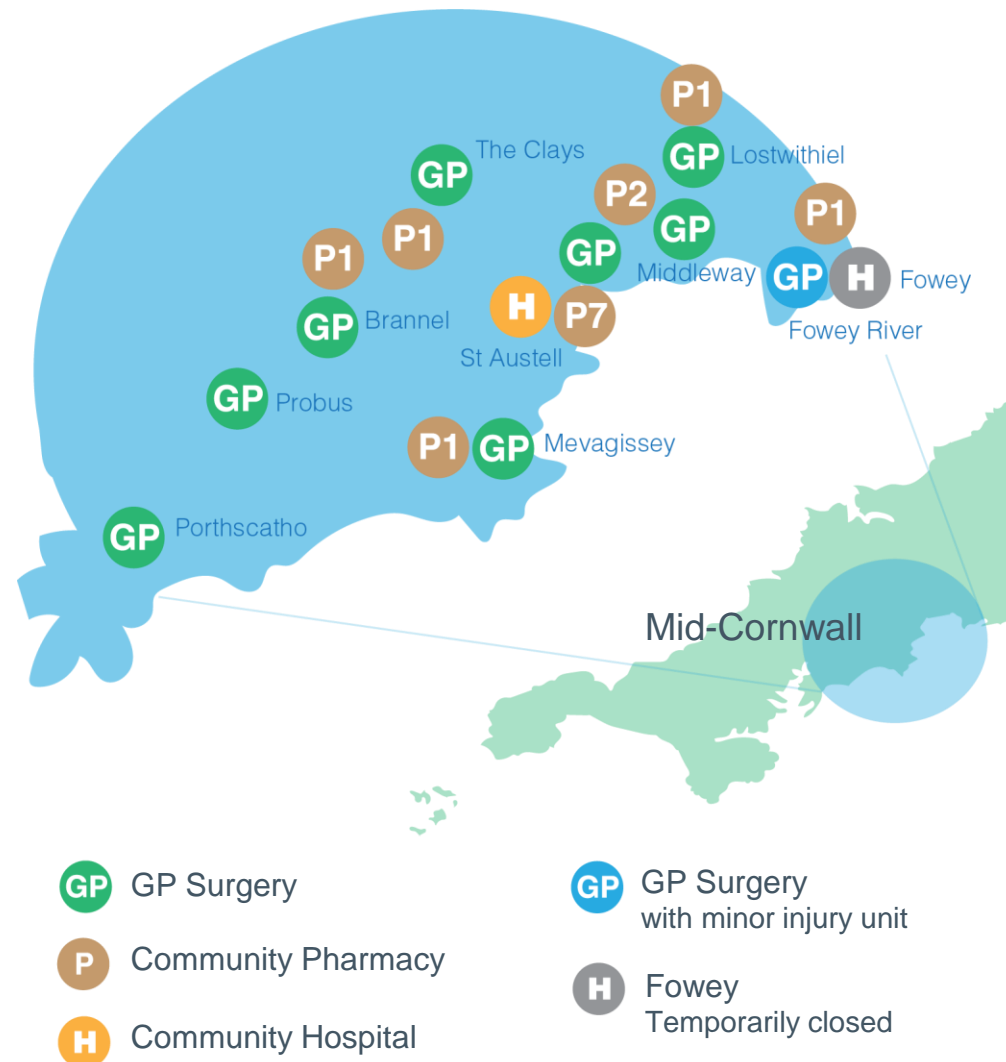
We want to empower people to take control of their lives. Health and care services need to work together to improve people's health and wellbeing, and reduce health inequalities.

Provide person-centred care as close to people's home as possible.

We'll provide safe, high quality, timely and compassionate care where people live, whenever possible.

Work with our communities on our plans to ensure services reflect the needs of each community.

Make Cornwall and the Isles of Scilly a great place to work in health and care services.



Why are we here?

Who lives here?



SHAPING
OUR FUTURE

Cornwall and the Isles of Scilly
Health and Social Care Partnership

Population: 59,515 people.

Health & wellbeing
23% of people have a
limiting long-term
condition, compared with
18% across England.

Access & transport
17% of households
have no car, compared
with 26% across
England.

Age

More people older than
65 live in mid (south)
Cornwall than the
England and South
West average.

Population

25.8% (15,210) of the
population (59,515) are
older than 65, compared
with 21.8% of the South
West, and 18.0% of
England.

Communities & environment

People like living here:
83.9% of people are
satisfied with their
neighbourhood, compared
with 79.3% across
England.

Why are we here?

Who lives here?



SHAPING
OUR FUTURE

Cornwall and the Isles of Scilly
Health and Social Care Partnership

The dependency ratio (ratio of non-working age) to working age of 0.74% is higher than England average of 0.59%.

1,275 adults of working age (3.7%) claim mental health-related benefits. England average is 2.7%.

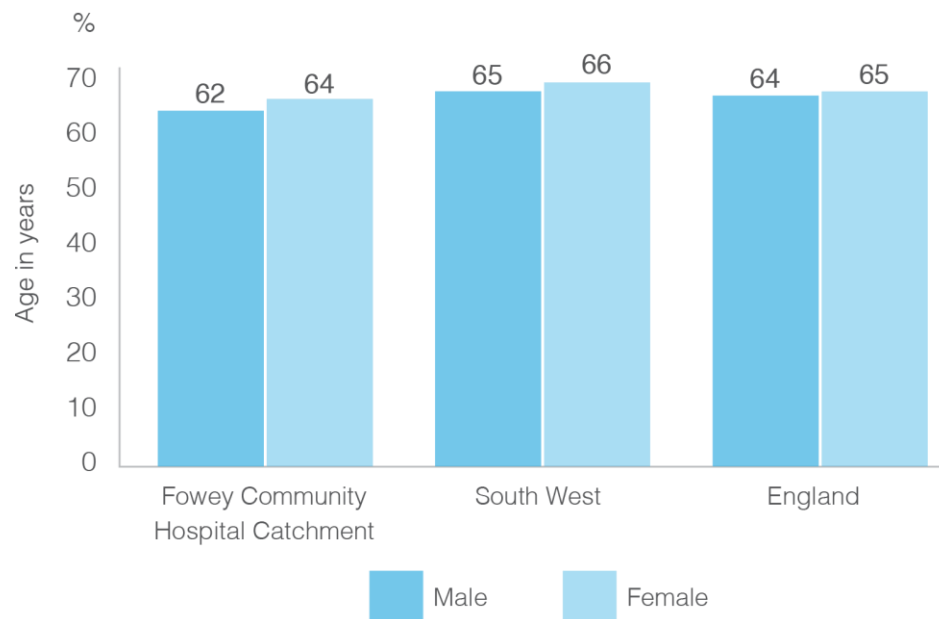
1,725 people older than 65 (11.3%) have attendance allowance.

6,470 pensionable households – 27% and higher than England average of 20.7% of population.

6,624 people are providing unpaid care – higher than England average.

3,630 pensioners living alone.

Disability-free Life Expectancy



Why are we here?

Fowey and the surrounding areas.

There are no extra care housing beds to provide an alternative to long-term residential care.

Two care homes and 67 beds, and 63 nursing beds have closed during the past two years.

Five GP surgeries, with a registered population of 59,515 people:

Fowey Lostwithiel Mevagissey
St Austell Middleway



From December 2017 to November 2018, 270 people had their discharge from hospital delayed.

19 admissions a month to hospital from care homes. 80 people receiving NHS Continuing Healthcare.

Higher numbers of local staff are reaching retirement age.

Staff Group	Heads	% Aged 55+
Practice Nurses	28	29% (8 heads)
GPs	34	15% (5 heads)
Community Nurses	21	5% (1 head)

Why are we here?

About Fowey Community Hospital



SHAPING OUR FUTURE

Cornwall and the Isles of Scilly
Health and Social Care Partnership

NHS Property Services owns the building.

It's leased to Cornwall Partnership NHS Foundation Trust (CFT), which provides hospital services.

The MIU closed in 2015 due to low use.

59 attendances at MIU in the 12 months before it closed.

March 2016 inpatient beds reduced from 10 to six due to fire safety concerns.



Why are we here?

About Fowey Community Hospital



SHAPING OUR FUTURE

Cornwall and the Isles of Scilly
Health and Social Care Partnership

Remaining inpatient beds temporarily closed in August 2016 due to infection control concerns about the condition of the building and the viability of running a hospital with very small bed numbers.

130 people admitted to an inpatient bed in 12 months before they closed.

Hospital beds were occupied on average 89% of the time.

Nearest MIU and inpatient service is in St Austell (8 miles away). There are also inpatient and MIU facilities in Bodmin (12 miles away)

Nearest emergency department in Truro is 25 miles away.

Plans to develop an urgent treatment centre at Bodmin Hospital (12 miles away).



What have people told us is important?



SHAPING
OUR FUTURE

Cornwall and the Isles of Scilly
Health and Social Care Partnership

Focus on prevention and proactive care.

Personalise care and support to help people achieve what matters to them.

Coordinate care and support locally.

Develop the role of communities to provide support.

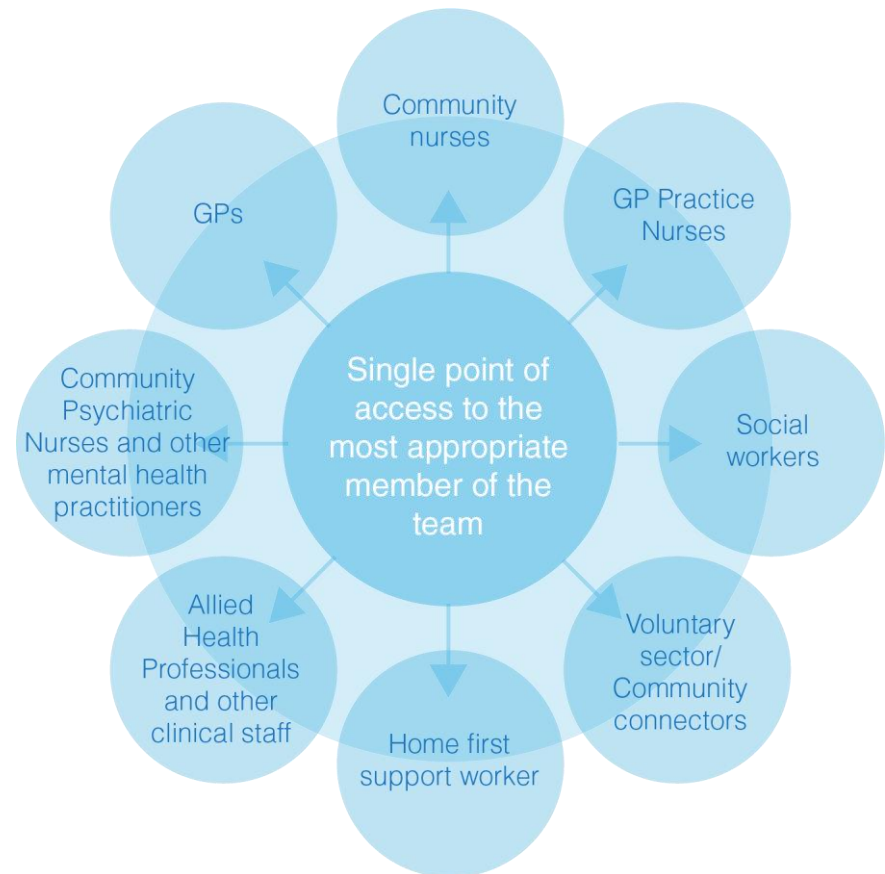
Improve care home quality and resilience.

Improve dementia care.

Improve support for carers.



An Integrated Team



What people in mid-Cornwall have told us.



SHAPING
OUR FUTURE

Cornwall and the Isles of Scilly
Health and Social Care Partnership

Consider increase
of tourists in
summer and best
deployment of
workforce

Enhance
services in
primary care and
involve them in
care planning

Reduced access to
'care' out of hours
needs to be
considered

Futureproof the
system by
referring to local
development
plans

A range of
diagnostic services
needs to be
available

Inform the
public and be
consistent

Expand and
blend MDTs –
include
pharmacy,
police and fire

Empower people
to self-care via
pharmacies and
make every
contact count

Include mental
health in the UTC
model

UTC should be a
one stop shop –
consistent
service and
opening times

Consider wrap
around services
that would be
required.

Provide
consultations
via video-
conferencing

Empower people
to self-care via
pharmacies and
make every
contact count

Co-location of
services in UTC
building will promote
cross-working and
efficiency

Option and Evaluation Process

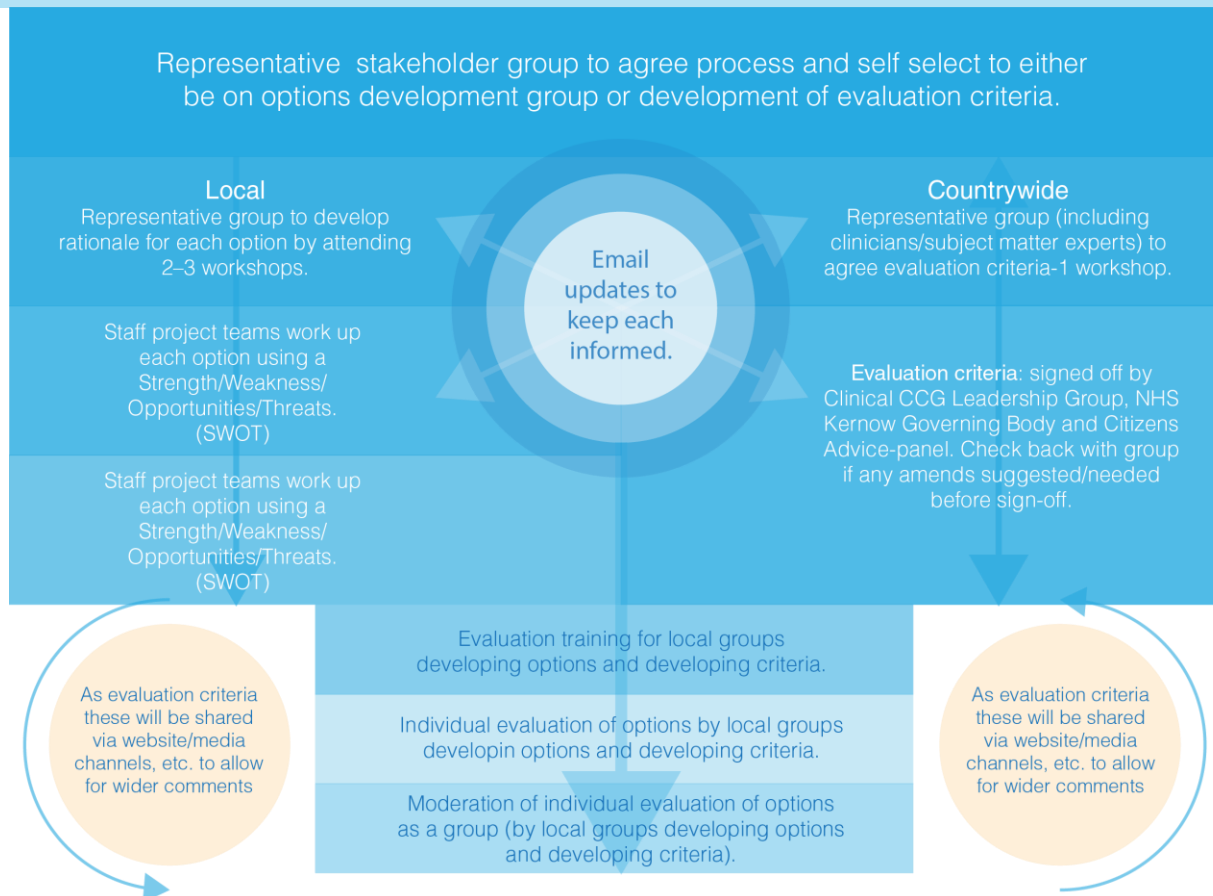


Table 1 : What are our community needs, and what's important to us?

Table 2 : What are our key challenges in supporting communities and people to thrive?

Table 3 : What do we need to change to provide local care and support services that are fit for the future?





SHAPING
OUR FUTURE

Cornwall and the Isles of Scilly
Health and Social Care Partnership

Thank you.