



SHAPING OUR FUTURE

Cornwall and the Isles of Scilly
Health and Social Care Partnership

Integrated community services review



Our vision

Everyone working in health and social care are committed to the following vision:

- We will work together to ensure the people of Cornwall and the Isles of Scilly stay as healthy as possible for as long as possible.
- We will support people to help themselves and each other so they stay independent and well in their community.
- We will provide services that everyone can be proud of and that reduce the cost overall.

The Shaping our Future programme is founded on collaboration and integration.

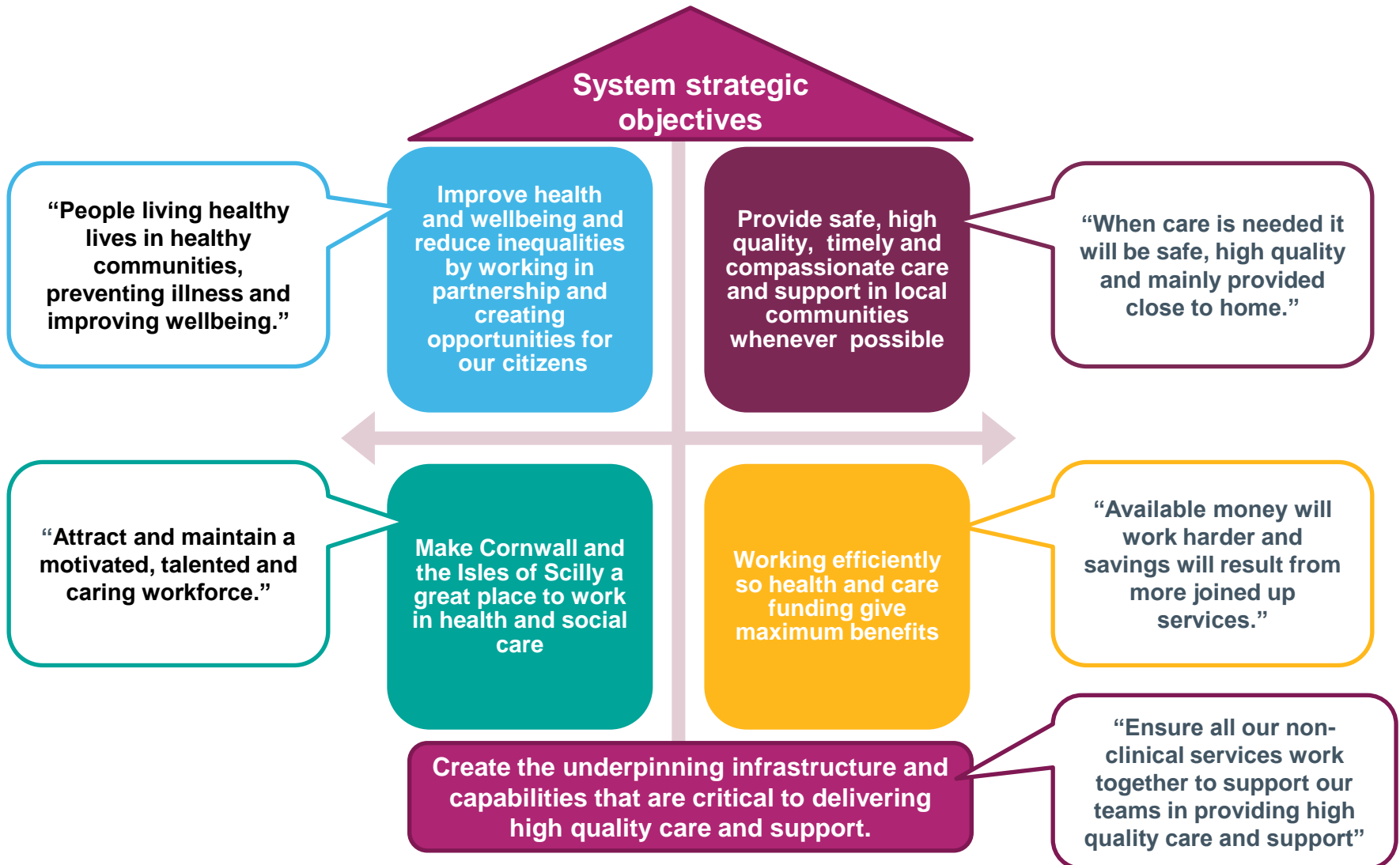


Our objectives



**SHAPING
OUR FUTURE**

Cornwall and the Isles of Scilly
Health and Social Care Partnership



How will we achieve our objectives?



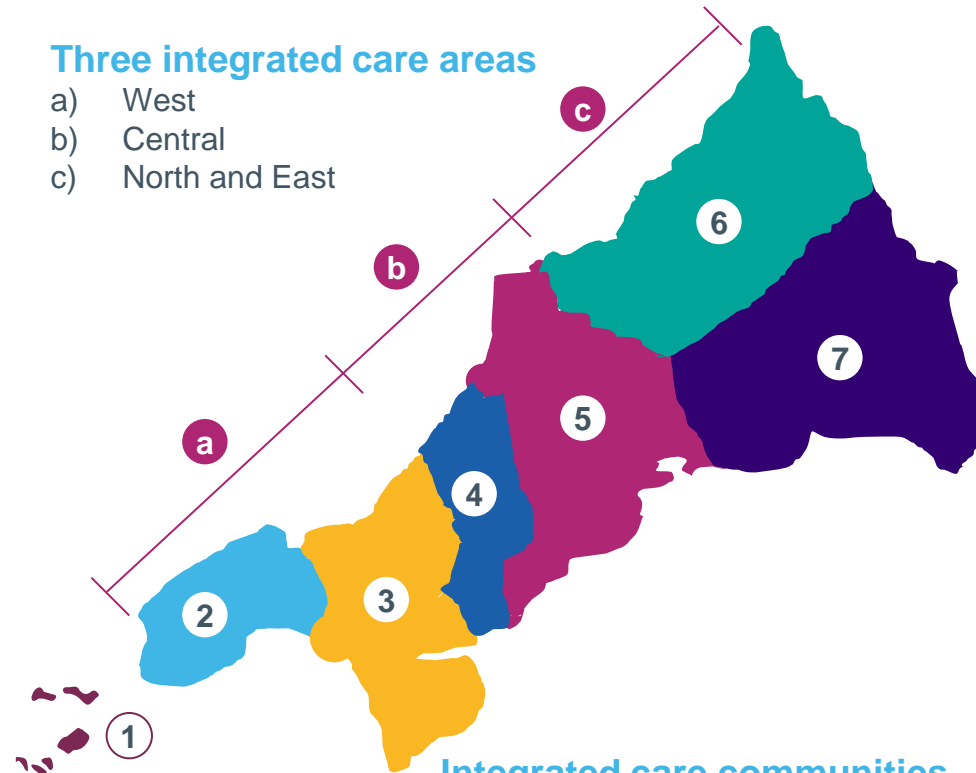
SHAPING OUR FUTURE

Cornwall and the Isles of Scilly
Health and Social Care Partnership

- We want to develop local 'integrated community services to:
 - i. **Proactively empower people** to take control of their own lives and interact with relevant key workers as required
 - ii. **Provide person-centred care** as close to home as possible
 - iii. **Operate without barriers** across different teams and organisations
 - iv. **Include members of the community** working in partnership with health, social care and voluntary sector colleagues.
- The integrated community model of care will provide the foundation for creating effective and efficient services that are easy to access.
- The development of the integrated community services will play a significant part in how our community assets are utilised in the future.

Three integrated care areas

- a) West
- b) Central
- c) North and East



Integrated care communities

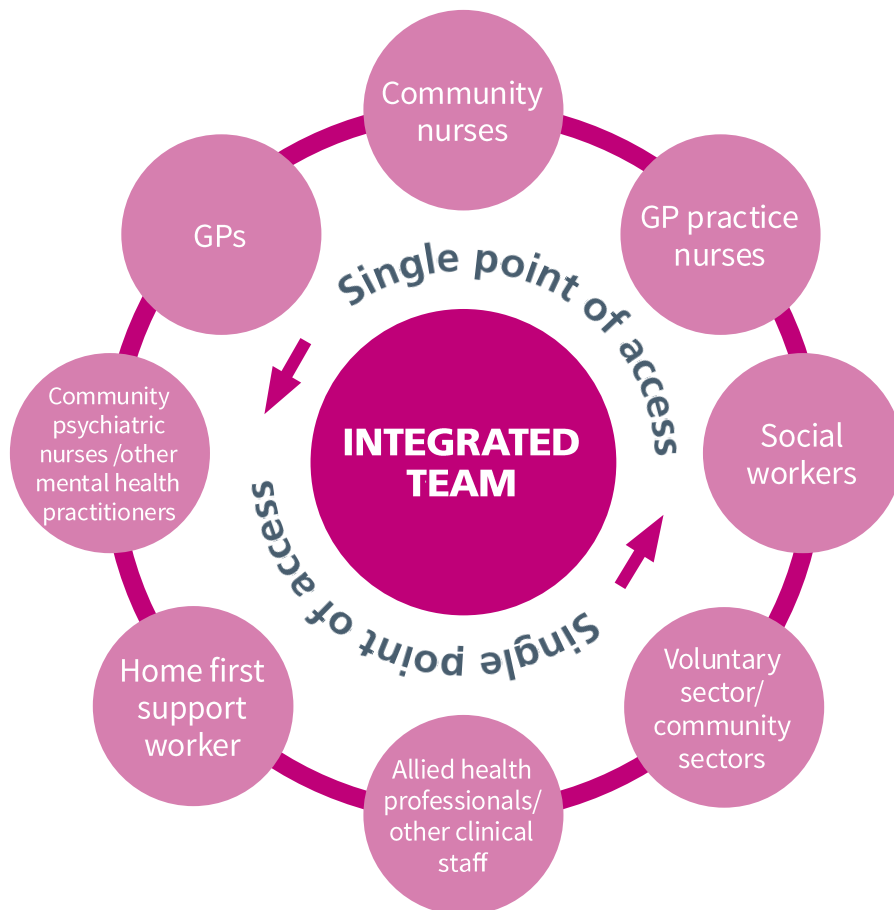
1. Isles of Scilly
2. West (Penwith) - 64,545
3. West to mid (Kerrier) - 97,499
4. Mid (Carrick) – 101,910
5. Mid to east (Restormel plus Roseland) - 129,746
6. North Cornwall – 64,579
7. East Cornwall – 102,291

How our teams will organise themselves



SHAPING
OUR FUTURE

Cornwall and the Isles of Scilly
Health and Social Care Partnership



What have people told us is important?

- ✓ Focus on prevention and proactive care
- ✓ Personalising care and support to help people achieve what matters to them
- ✓ Coordinating care and support locally
- ✓ Developing the role of local communities in providing support
- ✓ Improving care home quality and resilience
- ✓ Improving dementia care
- ✓ Improving support for carers

How do we achieve place based care



SHAPING
OUR FUTURE

Cornwall and the Isles of Scilly
Health and Social Care Partnership



We start with the individual

Moving from:
“What’s the matter with you?”
to

“What matters to you?”



We organise services around individuals

- All agencies aligned on geographic planning footprints.
- Multi-agency teams including mental health.
- Increasing the numbers of people on personal health budgets.

How do we achieve place based care



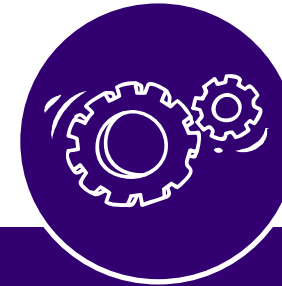
SHAPING
OUR FUTURE

Cornwall and the Isles of Scilly
Health and Social Care Partnership



We focus on the community

- Community not organisation-led
- Bottom-up, co-production to 'test and learn' new ways of working
- Voluntary and community sector recognised as equal partners in care/ support delivery
- 'Community makers,' 'connectors' and social prescribers to enhance the value of what we offer, ensuring interventions are personalised



We consider all 'assets'

- Skills, knowledge and commitment of community members
- Friendships, community cohesion and neighbourliness
- Local groups, organisations and informal networks
- Physical, environmental and economic resources
- Our local frontline staff and volunteers
- People who use services and want to support others to provide services and support
- 'Community beds' where care and support can be provided: their own home, nursing or residential home, extra care housing, hospice, hospitals and re-ablement flats