



SHAPING
OUR FUTURE

Cornwall and the Isles of Scilly
Health and Social Care Partnership

Welcome

Saltash

About today



SHAPING
OUR FUTURE

Cornwall and the Isles of Scilly
Health and Social Care Partnership

Thank you for working with us to improve health and care services in Saltash.

2.00–2.20 : About today, and why we're here.

2.20–2.40 : First small table discussion.

2.40–3.00 : Second small table discussion.

3.00–3.15 : Break/refreshments

3.15–3.35 : Third small table discussion.

3.35–3.50 : Conclusions and review of discussion points.

3.50–4.00 : What next?

4.00pm : End.

Any questions?



Our vision for health and care services

Why are we here?



SHAPING
OUR FUTURE

Cornwall and the Isles of Scilly
Health and Social Care Partnership

The areas we're focusing on.

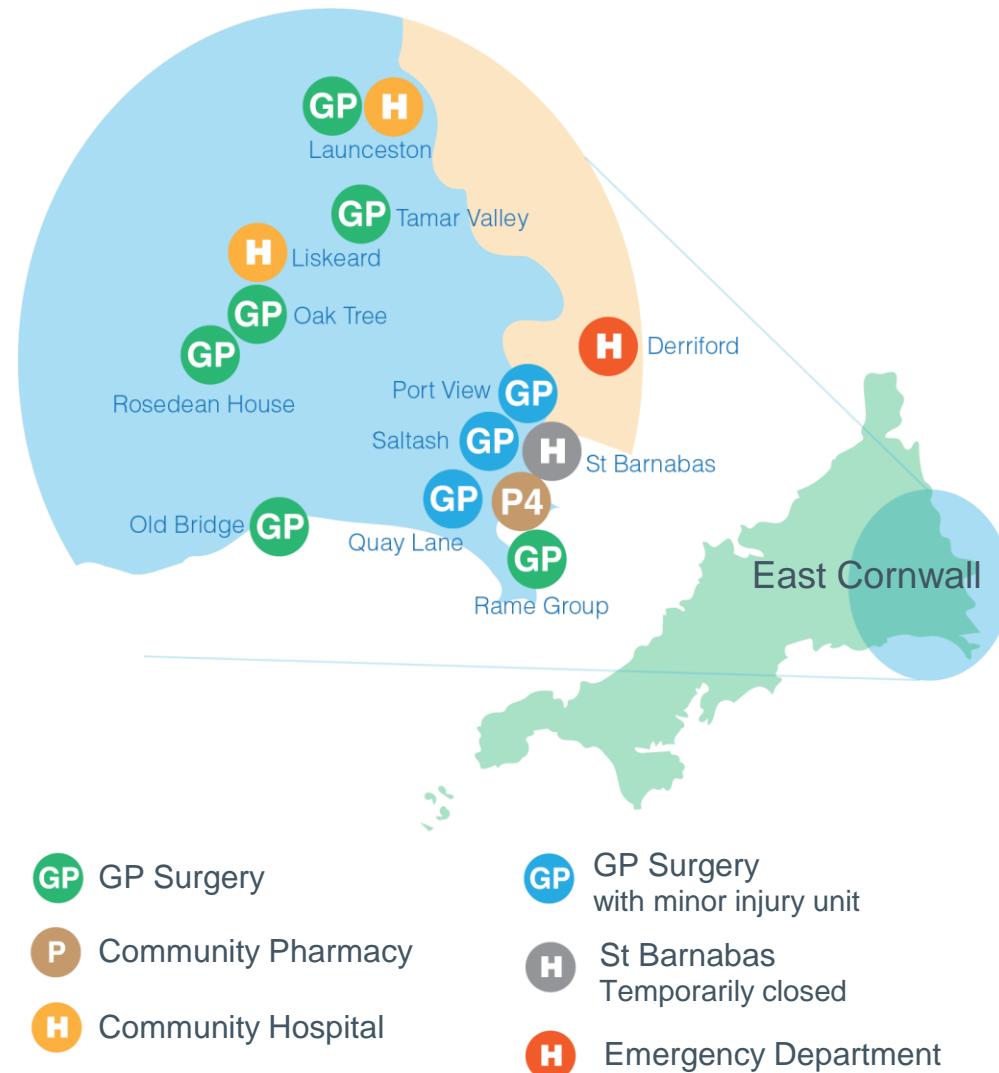
We want to empower people to take control of their lives. Health and care services need to work together to improve people's health and wellbeing, and reduce health inequalities.

Provide person-centred care as close to people's home as possible.

We'll provide safe, high quality, timely and compassionate care where people live, whenever possible.

Work with our communities on our plans to ensure services reflect the needs of each community.

Make Cornwall and the Isles of Scilly a great place to work in health and care services.



Why are we here? Who lives here?



SHAPING
OUR FUTURE

Cornwall and the Isles of Scilly
Health and Social Care Partnership

Population: 23,600 people.

Health & wellbeing

18% of people have a
limiting long-term
condition.

Communities & environment

People like living here:
83.9% of people are
satisfied with their
neighbourhood, compared
with 79.3% across
England.

Access & transport

14% of households
have no car, compared
with 26% across
England.

Population

24.1% (5,680) of the
population (23,600) are
older than 65, compared
with 21.8% of the South
West, and 18.0% of
England.

Why are we here?

Who lives here?



SHAPING
OUR FUTURE

Cornwall and the Isles of Scilly
Health and Social Care Partnership

The dependency ratio (ratio of non-working age) to working age of 0.7% is higher than England average of 0.59%.

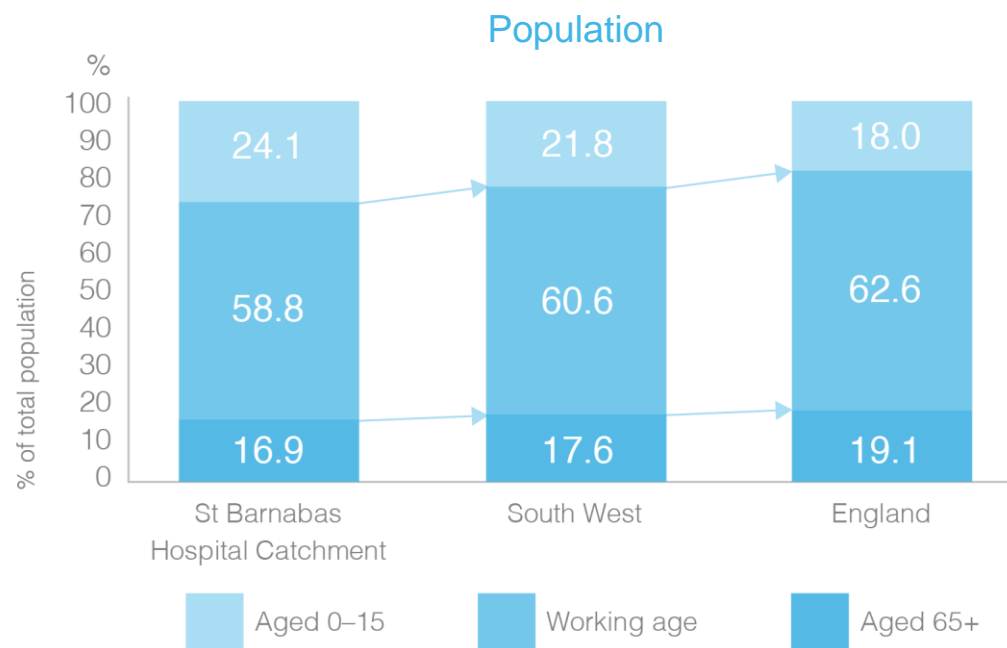
330 adults of working age claim mental health-related benefits.

635 people older than 65 claim attendance allowance.

1,321 pensioners are living alone.

2,809 people are providing unpaid care.

11% of children are living in poverty, compared with 17% across England.



Why are we here?

Saltash and the surrounding areas



SHAPING
OUR FUTURE

Cornwall and the Isles of Scilly
Health and Social Care Partnership

There are no extra care housing beds to provide an alternative to long-term residential care.

There are no care at home providers based in the area, although other providers do operate in this area.

Three GP surgeries, with a registered population of 23,600 people:

Port View Quay Lane
Saltash Health Centre



From December 2017 to November 2018, 42 people had their discharge from hospital delayed.

73 people are receiving NHS Continuing Healthcare, costing £31,851 a week.

Higher numbers of local staff are reaching retirement age.

Staff Group	Heads	% Aged 55+
Practice Nurses	10	30% (3 heads)
GPs	21	29% (6 heads)
Community Nurses	10	30% (3 heads)

Why are we here?

About Saltash Community Hospital



SHAPING OUR FUTURE

Cornwall and the Isles of Scilly
Health and Social Care Partnership

NHS Property Services owns the building.

It's leased to Cornwall Partnership NHS Foundation Trust (CFT), which provides hospital services.

The MIU closed in December 2016 to focus staff onto the inpatient wards. The unit is staffed by nurses from the ward.

455 attendances at MIU in the 12 months before it closed.

February 2017 the inpatient beds were temporarily closed to support safe staffing levels at Liskeard Hospital.

209 people admitted to an inpatient bed in 12 months before they closed.

Hospital beds were occupied on average 80% of the time.



What have people told us is important?



SHAPING
OUR FUTURE

Cornwall and the Isles of Scilly
Health and Social Care Partnership

Focus on prevention and proactive care.

Personalise care and support to help people achieve what matters to them.

Coordinate care and support locally.

Develop the role of communities to provide support.

Improve care home quality and resilience.

Improve dementia care.

Improve support for carers.



An Integrated Team



What have people in Saltash told us is important?



SHAPING
OUR FUTURE

Cornwall and the Isles of Scilly
Health and Social Care Partnership

More people are attending Liskeard and Derriford hospitals.

A lot of elderly in Saltash don't drive.

There is a significant impact for patients and families travelling out of Saltash for health care.

There is no direct bus route to Derriford Hospital.

Workforce is stretched.

Consider family and children as well as adult's needs.

Model of care should be based on population needs.

Need more support in the community for those who are lonely, vulnerable – e.g. support groups, someone to talk to, offer advice.

Consider increase of tourists in summer and best deployment of workforce.

Primary care is very busy.

Option and Evaluation Process

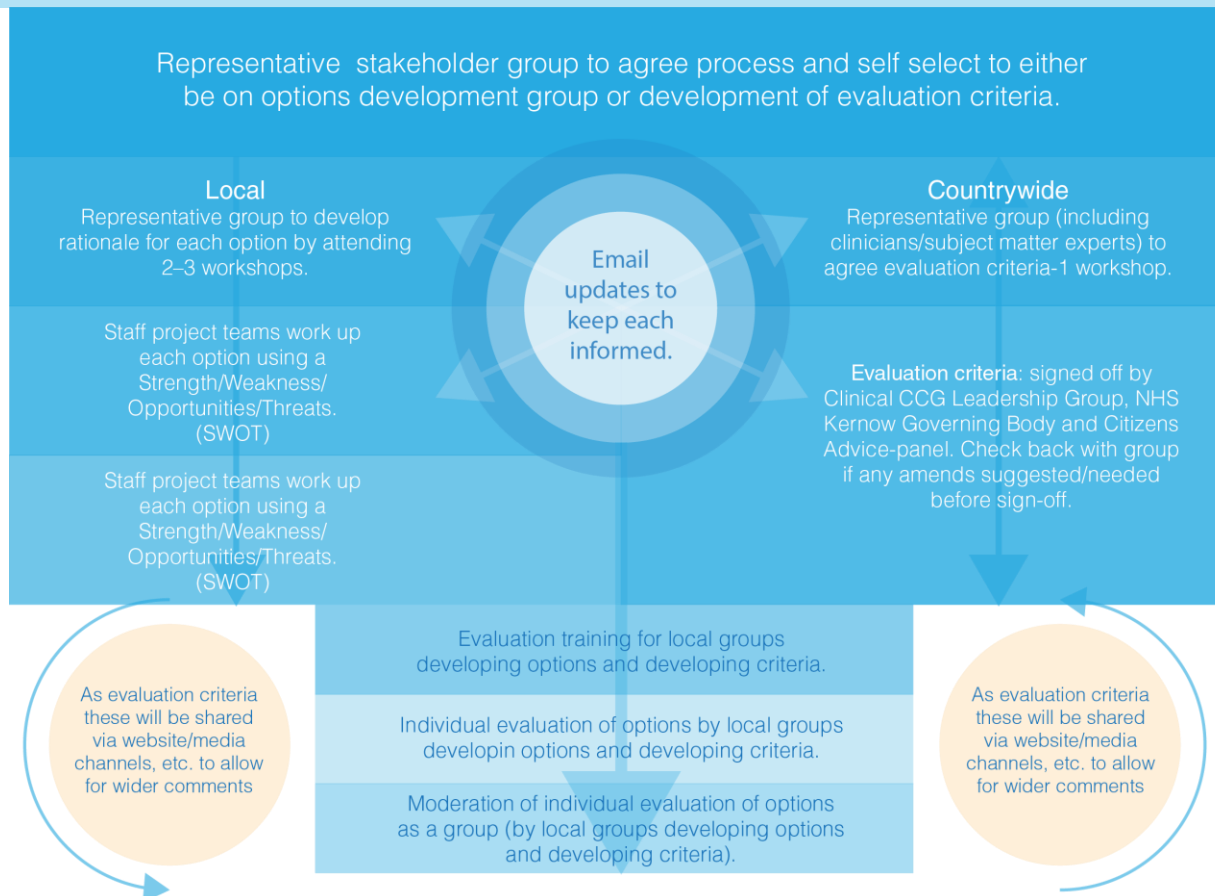


Table 1 : What are our community needs, and what's important to us?

Table 2 : What are our key challenges in supporting communities and people to thrive?

Table 3 : What do we need to change to provide local care and support services that are fit for the future?





SHAPING
OUR FUTURE

Cornwall and the Isles of Scilly
Health and Social Care Partnership

Thank you.