



Kernow

Clinical Commissioning Group

**NHS Kernow - Disclosure Log
Freedom of Information Requests
August 2018**

Contents

Children’s health	3
FOI 69430 Autism services.....	3
FOI 69180 Tongue Tie.....	4
Continuing healthcare	4
FOI 69440 Continuing healthcare applications	4
FOI 69610 Continuing healthcare information	5
FOI 69070 Continuing healthcare spend	8
Contracts.....	9
FOI 69480 AQP	9
FOI 69570 Dermatology services	13
FOI 69410 IT systems	13
FOI 69580 Locally enhanced services.....	13
Finance and budgets.....	15
FOI 69080 IT spend.....	15
FOI 69630 IT spend.....	15
FOI 69730 Mental health spend	16
Individual funding requests.....	18
FOI 69240 Individual funding requests	18
Long term conditions.....	18
FOI 69710 Bariatric services	18
FOI 69450 Facial palsy.....	19
FOI 69200 Migraine services.....	20
FOI 69800 Wheelchair service	22
Mental health and learning disabilities.....	23
FOI 69550 Mental health services	23
FOI 69730 Mental health spend	24
FOI 69270 Mental health spend	25
Organisation.....	29
FOI 69620 Consultant spend.....	29
Prescribing and pharmacies.....	31
FOI 69220 Wound care products.....	31
Properties and estates	32
FOI 69600 Strategic estates plan	32
Public health.....	33
FOI 69390 Health apps.....	33
FOI 69650 Out of hours services	34

Referral management.....	35
FOI 69540 RMS information	35
FOI 69150 Ophthalmology services.....	36
Urgent care	37
FOI 69210 Urgent care contacts.....	37

The information supplied to you continues to be protected by the Copyright, Designs and Patents Act 1988. You are free to use it for your own purposes, including any non-commercial research you are doing and for the purposes of news reporting. Any other re-use, for example commercial publication, would require the permission of the copyright holder.

Most documents supplied by NHS Kernow Clinical Commissioning Group will have been produced by local officials and will be our copyright. Information you receive which is not subject to our copyright continues to be protected by the copyright of the person, or organisation, from which the information originated. You must ensure that you gain their permission before reproducing any third party information.

All appendices for this disclosure log are available upon request by emailing KCCG.FOI@nhs.net with the appropriate FOI reference below.

Children's health

FOI 69430 Autism services

Date request received:	14/08/2018	FOI ref:	69430
Requested information:			
Does the CCG commission services that provide a specific diagnostic pathway for children within your CCG for each of the following conditions: <ol style="list-style-type: none"> 1. Attention Deficit/Hyperactivity Disorder 2. Autism Spectrum Disorder 3. Developmental Coordination Disorder/Developmental Dyspraxia 4. Developmental Dyscalculia 5. Developmental Dyslexia 6. Specific language impairment/Developmental language disorder 			
Response:			
<ol style="list-style-type: none"> 1. NHS Kernow does commission services a specific diagnostic pathway for children with Attention Deficit/Hyperactivity Disorder. These are provided by Cornwall Partnership NHS Foundation Trust (CFT), cpn-tr.freedomofinformation@nhs.net. 2. NHS Kernow does commission services a specific diagnostic pathway for children with Autism Spectrum Disorder. These are provided by Cornwall Partnership NHS Foundation Trust (CFT), cpn-tr.freedomofinformation@nhs.net. 			

<p>tr.freedomofinformation@nhs.net and Royal Cornwall Hospitals Trust, rch-tr.FOI@nhs.net.</p> <p>3. NHS Kernow does not commission services a specific diagnostic pathway for children with Developmental Coordination Disorder/Developmental Dyspraxia.</p> <p>4. NHS Kernow does not commission services a specific diagnostic pathway for children with Developmental Dyscalculia.</p> <p>5. NHS Kernow does not commission services a specific diagnostic pathway for children with Developmental Dyslexia.</p> <p>6. NHS Kernow does not commission services a specific diagnostic pathway for children with Specific language impairment/Developmental language disorder.</p>
Attachment(s):
None
Date response sent:
30/08/2018

FOI 69180 Tongue Tie

Date request received:	03/08/2018	FOI ref:	69180
Requested information:			
<p>1. How many babies (i.e) below the age of 1) were diagnosed with issues of ankylossia (tongue-tie) in each financial year since 2013/14.</p> <p>2. Of the babies diagnosed with issues of ankylossia (tongue-tie) in 2017 how many had a surgical procedure carried out by NHS surgeons to resolve these specific issues, and how long did they wait (on average, in calendar days) for the procedure following diagnosis?</p> <p>3. In 2017, what was the mean age of babies with such issues when the ankylossia (tongue-tie) procedure was performed?</p>			
Response:			
<p>NHS Kernow does not hold the information requested, for more information please contact the providers: Royal Cornwall Hospitals Trust, rch-tr.FOI@nhs.net Plymouth Hospitals NHS Trust, plh-tr.foi-requests@nhs.net</p>			
Attachment(s):			
None.			
Date response sent:			
06/08/2018			

Continuing healthcare

FOI 69440 Continuing healthcare applications

Date request received:	15/08/2018	FOI ref:	69440
Requested information:			
<p>1. What was the average time period in your CCG in days/hours from the point at which a Fast Track CHC application is made to the care package being</p>			

<p>provided for the financial year 2017/18?</p> <ol style="list-style-type: none"> 2. What was the average time period in days/hours from the point at which a Fast Track CHC application is <i>approved</i> to the care package being provided for the financial year 2017/18? 3. During the financial year 2017/2018, how many applications for fast track CHC did the CCG receive? 4. During the financial year 2017/18, how many applications for fast track CHC were funded?
Response:
<ol style="list-style-type: none"> 1. NHS Kernow does not hold this information. 2. NHS Kernow does not hold this information. 3. During the financial year 2017/18 NHS Kernow received 1557 applications for fast track Continuing Healthcare. 4. Of these applications 1553 were funded.
Attachment(s):
None
Date response sent:
06/09/2018

FOI 69610 Continuing healthcare information

Date request received:	69610	FOI ref:	20/08/2018
Requested information:			
<p>Delivery of end-to-end CHC services</p> <ol style="list-style-type: none"> 1. Who delivers your end to end Continuing Healthcare service? Please select one of the below options <ol style="list-style-type: none"> a. CCG b. CCG plus CSU/Private Company c. CSU/Private company 2. If the CCG utilises a private company, please provide the following information: <ol style="list-style-type: none"> a. Name of the provider: b. Annual cost of the services in 17/18 c. Contract start and end dates <p>Allocation of Resources</p> <ol style="list-style-type: none"> 3. Does the CCG have a standardised method for allocating resources for CHC (e.g. setting and agreeing an indicative personal health budget(PHB))? 4. How is this managed? (In-house/outsourced to a private provider/outsourced to a CSU or local authority) 5. Please name the system used by the CCG to determine the PHB (e.g. Imosphere, Norfolk model, Manchester model, locally developed etc.) <ol style="list-style-type: none"> a. Is this a needs-based or points-based system*? b. What was the annual cost to the CCG in 17/18 for using this system? c. What are the contract start and end dates? <p>*Needs-based RAS systems consider the CCG's local provider costs, whereas points-based systems are based on assessment domain ratings</p>			

CHC Assessment Support

6. Does the CCG use any third-party nurse assessment teams to support any part of the CHC assessment process?
 - a. If so, please name the supplier
 - b. Please provide a brief description of the service (supporting assessments, re-assessments etc.)
 - c. What was the annual cost to the CCG in 17/18?
 - d. What are the contract start and end dates?

Case Management Systems

7. What CHC case management system is used (e.g. QA, Broadcare, Caretrack etc.)?
 - a. What was the annual cost to the CCG in 17/18?
 - b. What are the contract start and end dates?
 - c. Did the CCG procure these services via a framework? If so, please provide the name of the framework

Brokerage

8. How does the CCG manage the brokerage? (In-house/outsourced to a private provider/outsourced to a CSU/outsourced to a local authority)?
9. Does the CCG use a framework with agreed rates or a preferred supplier list for:
 - a. Residential/ nursing Care providers
 - b. Domiciliary Care Agencies
10. Does the CCG review their contracts/costs for care suppliers each year?
11. Does the CCG use an e-Brokerage system (e.g. Adam HTT, E-Brokerage etc.)?
 - a. If so, please provide the name of the supplier
 - b. What was the annual cost to the CCG in 17/18?
 - c. What are the contract start and end dates?
12. Does the CCG have costed care plans for residential care suppliers?

System Integration

13. Do any of the systems used by the CCG for CHC (eg. assessments, allocation of resources, brokerage, and case management) integrate?
 - a. If so, please provide further detail with regards to which systems integrate with each other

CHC Consultancy

14. Have you had any third-party consultants in to review the CCGs CHC processes and practices, or whereby the third party looked into the CCGs end-to-end delivery of CHC in the last 2 financial years (15/16 – 17/18)?
 - a. If so, please provide the name of the organisation
 - b. Please provide a brief description of the services
 - c. What was the cost for completing this work?

Response:

Delivery of end-to-end CHC services

1. NHS Kernow delivers its end to end Continuing Healthcare Services.
2. Not applicable

Allocation of Resources

3. NHS Kernow has a standardised method for allocating resources for CHC.
4. This is managed in house with partner provider support.
5. NHS Kernow uses the Manchester Model to determine PHB.
 - a. The Manchester Model is needs based using Decision Support Tool local provider costs and points-based on level of need.
 - b. There is no cost for this system.
 - c. Not applicable

CHC Assessment Support

6. NHS Kernow does not use any third-party nurse assessment teams to support any part of the CHC assessment process.
 - a. Not applicable
 - b. Not applicable
 - c. Not applicable

Case Management Systems

7. NHS Kernow uses Broadcare.
 - a. The cost for Broadcare in 2017/18 was £71,312.27.
 - b. The contact start and end dates are April 2018 – March 2019.
 - c. NHS Kernow procures these services through the local tender process.

Brokerage

8. NHS Kernow manages brokerage in house.
9. NHS Kernow uses the following frameworks;
 - a. NHS Kernow Continuing Healthcare Care home with nursing contract
 - b. Joint with Council - Home Care & Supportive Lifestyles Contract – Dynamic Purchasing System (DPS) Agreement.
10. NHS Kernow and Cornwall Council undertake joint annual reviews with their approved suppliers.
11. NHS Kernow uses an e-brokerage system.
 - a. The e-brokerage system is called ADAM.
 - b. There is no cost for this system to NHS Kernow.
 - c. The contract start end dates are June 2018 to June 2021.
12. NHS Kernow has an NHS Care Home with Nursing Contract for Continuing Healthcare with a clinically justified costing system supported by the Decision Support Tool CHC assessment domains.

System Integration

13. None of the systems used by NHS Kernow for CHC integrate.
 - a. Not applicable.

CHC Consultancy

14. No third party has been brought in specifically to review our CHC processes and practices, however, as with all NHS organisation, we are expected to participate in internal audits which are performed across a range of functions such as finance, contracting, risk and assurance, information governance, safeguarding, CHC etc. in the last two financial years (2016/17 and 2017/18)

- internal audits were carried out on CHC processes by our internal auditors.
15. The internal auditors are called TIAA.
 16. TIAA provide and internal audit function for NHS Kernow, carrying out reviews of the processes and practices in place in key functions of the organisation according to an agreed annual audit plan.
 17. In both 2016/17 and 2017/18 the annual audit plan was for 120 days of work at a cost of £41, 600 +VAt. The audits of the CHC function were included within this cost.

Attachment(s):

None

Date response sent:

13/09/2018

FOI 69070 Continuing healthcare spend

Date request received:	01/08/2018	FOI ref:	69070
Requested information:			
<ol style="list-style-type: none"> 1. How many adults in your CCG currently receive NHS Continuing Healthcare? 2. How many adults in your CCG currently receive each of the following: <ol style="list-style-type: none"> a. Fully funded NHS Continuing Healthcare packages of care? b. Joint funded Local Authority / NHS Continuing Healthcare packages of care? c. NHS funded nursing care? d. "Care at Home" NHS Continuing Healthcare packages care? 3. What was the total NHS Continuing Healthcare budget for adults in your CCG in the year 2017-18? 4. What was the actual amount spent on NHS Continuing Healthcare for adults by your CCG in the year 2017-18? 5. For each of the following categories, what was the actual amount spent by your CCG in the year 2017-18 for those adults in receipt of: <ol style="list-style-type: none"> a. Fully funded NHS Continuing Healthcare packages of care? b. Joint funded Local Authority / NHS Continuing Healthcare packages of care? c. NHS funded nursing care? d. "Care at Home" NHS Continuing Healthcare packages of care? 6. What is your CCG's total NHS Continuing Healthcare budget for adults for the year 2018-19? 7. What is your CCG's total anticipated NHS Continuing Healthcare budget for adults for the year 2019-20? 8. What is your CCG's total anticipated NHS Continuing Healthcare budget for adults for the year 2020-21? 9. What activities are being undertaken to prepare all appropriate staff for the implementation of the revised National Framework for NHS Continuing Healthcare which takes effect from 1st October 2018? 			
Response:			
<ol style="list-style-type: none"> 1. NHS Kernow currently has 1633 adults receiving NHS Continuing Healthcare. 2. NHS Kernow currently has the following; 			

- a. 539 fully funded NHS Continuing Healthcare packages of care.
- b. 74 joint funded Local Authority/NHS Continuing Healthcare packages of care.
- c. 915 NHS funded nursing care.
- d. 301 "Care at Home" NHS Continuing Healthcare packages of care.
3. NHS Kernow's total budget for adult NHS Continuing Healthcare Eligible and Fast Track for Adults in 2017/18 was £44.958,000.
4. The actual amount spent on NHS Continuing Healthcare Eligible and Fast Track for Adults in 2017/18 was £43.544,000.
5. The actual amounts by NHS Kernow were as follows;
 - a. The actual amount spent on NHS Continuing Healthcare Eligible and Fast Track for Adults for 2017-18 was £43.544,000. These categories are 'Fully Funded'.
 - b. The actual amount spent on NHS Continuing Healthcare Joint Funded packages for 2017-18 was £2.190,000.
 - c. The actual amount spent on NHS Funded Nursing care for 2017-18 was £8.532,000.
 - d. We are unable to provide the actual amount spent on "Care at Home" as our financial reporting system does not break it down to this level. In order to provide it, we would have to review in excess of 6,600 invoices so NHS Kernow exempts the release of this under Section 12 of the Freedom of Information Act as to collate this information would take one person working more than two and a half working days.
6. NHS Kernow's total budget for NHS Continuing Healthcare Eligible and Fast Track for Adults for 2018/19 is £41.975,000.
7. The budget for 2019-20 has not yet been set.
8. The budget for 2020-21 has not yet been set.
9. NHS Kernow Continuing Healthcare and Adult Social Care Colleagues attended two staff training days in June 2018. The development days were an opportunity to discuss the headline changes and what they mean to the Continuing Healthcare process. Checklist training for all relevant clinicians and social care practitioners will take place throughout September 2018. NHS Kernow Continuing Healthcare have also developed and formed a 'working party' to test out the competency framework that NHS England are developing in line with the revised framework.

Attachment(s):

None

Date response sent:

17/08/2018

Contracts

FOI 69480 AQP

Date request received:	15/08/2018	FOI ref:	69480
Requested information:			
1. Name of CCG area:			

2. How many people live in your CCG area?
3. Are any of the adult hearing services provided through Any Qualified Provider (AQP) in your CCG area?
 - a. Yes
 - b. No
 - c. If 'yes' please state how many providers
4. Do you have a policy on the implementation of the NICE guideline 'Hearing loss in adults: assessment and management'? (Please highlight the relevant response)
 - a. Yes
 - b. No
5. When adults have aidable hearing loss in both ears, what is your CCG policy? (Please highlight the relevant response)
 - a. Two hearing aids are always offered
 - b. One hearing aid is offered in the first instance unless someone specifically requests two hearing aids
 - c. Only one hearing aid is offered
 - d. We have a restriction in place for fitting hearing aids (please comment):
6. Please let us know:
 - a. The current average waiting time from GP referral to initial assessment
 - b. The current average waiting time from assessment to fitting appointment
 - c. The number of full time equivalent audiologists across your CCG
 - d. Your current audiology budget
 - e. Your non-complex tariff
7. Has there been any of the following changes to any of your services from the most recent financial year that figures are available to the previous financial year? (Please highlight all the relevant responses and delete as appropriate)
 - a. Increase/decrease/ no change in waiting times from GP referral to initial assessment
 - b. Increase/decrease/ no change in waiting times from assessment to fitting appointment
 - c. Increase/decrease/ no change in the number of full time equivalent audiologists
 - d. Increase/decrease/ no change in real terms audiology budget
 - e. Increase/decrease/ no change in non-complex tariff
 - f. Other (please comment)
8. Is it your policy to offer follow up appointments routinely after hearing aid fitting appointments in your CCG area?
 - a. Yes
 - b. No
9. Is it your policy to charge for any the following in your CCG area? (Please highlight all the relevant responses)
 - a. Battery provision
 - b. Lost hearing aid
 - c. Ear moulds
 - d. Swim plugs
 - e. Tubing

- f. Earwax removal
- g. Other (please comment)

Response:

1. Cornwall and Isles of Scilly
2. We serve a population of approximately 534,000 people living mainly in Cornwall and Isles of Scilly, although we are responsible for people living in Devon who are registered with one of our GP practices.
3. Yes – NHS Kernow commissions a Routine Age Related Hearing Loss Service via AQP arrangements for people 55 years or older. There are 7 AQP audiology providers who cover the Routine Age Related (55+) Hearing Loss Service on behalf of NHS Kernow.
4. NHS Kernow does not have a policy to implement the NICE Guidelines ‘Hearing loss adults: assessment and management’, but these guidelines have been reviewed by our Clinical and Commissioning Leads and any necessary changes will be considered as part of any forthcoming reviews of the audiology service.
5. When adults have aidable hearing loss in both ears two hearing aids are always offered where clinically appropriate.
6.
 - a. NHS Kernow does not hold information on average waiting times for GP referral to initial assessment for all providers. However the quality requirement for this contract stipulates that providers must assess 90% of individuals within 30 working days of GP referral.
 - b. NHS Kernow does not hold the average waiting times from assessment to fitting for all providers. However, the quality requirement for this contract stipulates that if fitting is not undertaken at the assessment appointment, it should be undertaken within 20-25 working days from the assessment (unless the service user requests for this to be outside of this time).
 - c. NHS Kernow does not mandate a minimum number of audiologists within the contract. However, across the seven providers that we commission, there are 48.09 whole time equivalent audiologists.
 - d. The nature of an AQP contract is that there is no guaranteed activity. Consequently there is a £0 contract value for the AQP audiology service. We have made a planning assumption that spend for the AQP audiology service will be no more in 2018/19 than in the 2017/18 financial year and therefore the current budget for all AQP audiology is indicative of £2,320,000.
 - e. NHS Kernow non-complex tariff is as follows, Local Prices – AQP Audiology 2017/19;

Tariff	Basis of Contract	Price (excl VAT on goods elements)
1	Assessment only	£49
2	Assessment, fitting of 1 aid, follow up, 3 years aftercare and 3rd year review	£241
3	Assessment, fitting of 2 aids, follow up, 3 years aftercare and 3rd year	£333

	review	
4	Annual aftercare and review (after 3rd year review, where hearing needs have not changed and re-assessment into the pathway is not required)	£25
5	Replacement hearing aid (due to mechanical failure outside of warranty during a period of annual aftercare following the 3rd year review)	£68


7.
 - a. NHS Kernow's quality standards have changed in the last 12 months, this now gives our providers up to 30 working days from referral to assessment (this quality standard was previously 16 working days). This is in line with the NHS Constitutional standard for diagnostic tests of six weeks.
 - b. There has been a change in our quality standard within the last 12 months which now gives our providers up to 25 working days from assessment to fitting (when same day fit is not appropriate). This quality standard was previously 20 working days.
 - c. We are unable to provide a direct comparison between the numbers of full time equivalent audiologists in 2017/18 and 2018/19 as have different AQP providers undertaking our service across these time periods as a result of a re-procurement of AQP audiology services in mid-2017. However as highlighted in question 6, NHS Kernow do not mandate a particular number of audiologists as part of this contract.
 - d. The nature of an AQP contract is that there is no guaranteed activity. Consequently there is £0 contract value for the AQP audiology service. We have made a planning assumption that spend for the audiology service will be no more in 2018/19 than 2017/18 and therefore the current budget for all AQP audiology is indicative of £2,320,000.
 - e. Our AQP audiology tariff was reduced by 10% in October 2017 following a re-procurement of our AQP audiology services.
8. It is a requirement of the service specification for all providers to offer follow up within 10 weeks of hearing aid fitting and within five working days if quicker follow up is requested by the individual in receipt of hearing aids.
9. NHS Kernow's charging policy is as follows;
 - a. We do not charge for battery provision.
 - b. We do charge for lost hearing aids – NHS Kernow will reimburse providers for cost of issuing one lost hearing aid.
 - c. We do not charge for ear moulds.
 - d. Swim plugs do not form part of our NHS audiology provision.
 - e. We do not charge for tubing.
 - f. We do not charge for earwax removal.

Attachment(s):
None
Date response sent:
06/09/2018

FOI 69570 Dermatology services

Date request received:	17/08/2018	FOI ref:	69570
Requested information:			
Does the CCG have an existing Community Dermatology Service			
If you do please include within the response			
<ol style="list-style-type: none"> 1. Who is the existing provider 2. Length of existing contract 3. Date you are looking to re-commission the contract 			
Response:			
There are Community Dermatology elements to all of NHS Kernow's Dermatology service. Information relating to contracts is available on our website; https://www.kernowccg.nhs.uk/about-us/what-we-spend-and-how-we-spend-it/ .			
Attachment(s):			
None			
Date response sent:			
30/08/2018			

FOI 69410 IT systems

Date request received:	14/08/2018	FOI ref:	69410
Requested information:			
The attached spreadsheet shows a number of questions regarding your mobile and fixed line telephony. Hopefully the questions are self explanatory, note there are comments in several cells to further clarify the required information.			
Response:			
Please see attachment.			
Attachment(s):			
 <p>NHS Kernow FOI 64910 attachment.xls</p>			
Date response sent:			
04/09/2018			

FOI 69580 Locally enhanced services

Date request received:	17/08/2018	FOI ref:	69580
-------------------------------	------------	-----------------	-------

Requested information:

Please can you fill out the following table detailing all CCG locally commissioned services in general practice:

Locally commissioned service (LCS)	How much a practice can earn per patient

Response:


None of the Locally Enhanced Services commissioned by NHS Kernow are on a per patient 'rate' basis – i.e. a block contract based on list size. All are activity based and the unit price for the activity is included in the table below.

Description of Services	Unit Price
MRSA - Pre-Operatively	£20.00
MRSA - Post Contamination Swabbing	£20.00
MRSA - Prescription for Decontamination	£20.00
24 Hr ECG - Patients registered at practice	£81.00
24 Hr ECG - Patients referred from another practice	£91.00
24 Hr Blood Pressure Monitoring	£65.00
Minor Injuries - Advice & Referral	£36.61
Minor Injuries - Treatment	£54.91
Pre/Post Op: Removal of Sutures (ROS/ROC)	£15.25
Pre/Post Op: Wound Dressings	£20.34
Pre/Post Op: Examination/Tests	£15.25
Pre/Post Op: GORH Agonists	£15.25
Pre/Post Op: One Off Injections	£15.25
Pre/Post Op: Bloods	£10.17
Pre/Post Op: Urine Tests	£10.17
Pre/Post Op: Blood Pressure Checks	£10.17
Insulin Starts	£183.71
Near Patient Testing NES	£103.24
Near Patient Testing LES	£49.83
Anti-Coagulation Level 3	£119.55

Anti-Coagulation Level 4	£129.54	
Complex Care	£120.00 per bed per year	
Attachment(s):		
None		
Date response sent:		
23/08/2018		

Finance and budgets

FOI 69080 IT spend

Date request received:	01/08/2018	FOI ref:	69080
Requested information:			
<p>Please could you provide me with information about your organisation's ICT expenditure as detailed in the attached template.</p> <p>I have tried to find this information in your organisation's published data, but was unable to find the level detail I require.</p> <p>I fully expect that you may not be able to provide all the information I am looking for. If this is the case, please provide me with as much information as you can within the template. For example: you may be able to sub-totals for some categories, or provide information for only for certain years.</p> <p>Within the response, please include:</p> <ul style="list-style-type: none"> - Expenditure from all parts of your organisation (centralised IT and departmental IT); - As well as your own organisation, expenditure for any subsidiary organisations that fall within the scope of your accounts; and, - Both revenue (or operating) expenditure and capital expenditure. 			
Response:			
Please see attached.			
Attachment(s):			
 <p>FOI 69080 IT response.xlsx</p>			
Date response sent:			
30/08/2018			

FOI 69630 IT spend

Date request received:	20/08/2018	FOI ref:	69630
Requested information:			

The information that I require relates to the IT spend for FY 2016-17, FY 2017-18 and projected spend for FY 2018-19.

Please provide the information in the attached form (excel spreadsheet) which allows for easy entry of responses.

Response:

Please see attached. Please note spend on communications includes the cost of the communications staff and data/phone lines.

Attachment(s):



FOI 69630
response.xlsx

Date response sent:

14/09/2018

FOI 69730 Mental health spend

Date request received:	29/08/2018	FOI ref:	69730
Requested information:			
<ol style="list-style-type: none"> 1. Can you please provide the name(s) of NHS providers you commission mental health inpatient beds from? 2. Can you please provide the name(s) of non-NHS providers you commission mental health inpatient beds from? 3. What was your total annual spend on mental health services for the financial years 2013/14 to 2017/18 4. What is your planned spend for mental health services for the financial year, 2018/19? 5. Can you please provide the current number of: (please indicate the year this information refers to) <ol style="list-style-type: none"> a. Acute mental beds commissioned b. Rehabilitation[1] mental health beds commissioned 6. Can you please provide the past number of: <ol style="list-style-type: none"> a. Acute mental beds commissioned since 2013/14 b. Rehabilitation mental health beds commissioned 2013/14 7. Can you please provide information on the current per diem price paid for: (please indicate the year this information refers to) <ol style="list-style-type: none"> a. Acute mental health beds provided by NHS providers b. Acute mental health beds provided by non-NHS providers c. Rehabilitation mental health beds provided by NHS providers d. Rehabilitation mental health beds provided by non-NHS providers 8. Can you please provide information on the per diem price paid for: <ol style="list-style-type: none"> a. Acute mental health beds provided by NHS providers for each financial year since 2013/14 b. Acute mental health beds provided by non-NHS providers for each financial year since 2013/14 c. Rehabilitation mental health beds provided by NHS providers for each financial year since 2013/14 			

d. Rehabilitation mental health beds provided by non-NHS providers for each financial year since 2013/14

Response:

1. NHS Kernow commissions mental health inpatient beds from the following NHS providers;
 - Cornwall Partnership NHS Foundation Trust
 - Devon Partnership NHS Trust
2. NHS Kernow commissions mental health inpatient beds from the following non-NHS providers;
 - Cygnet Healthcare Ltd
 - Elysium Healthcare Ltd
 - Rushcliffe Independent Hospital
 - Priory Group Ltd
 - LS Healthcare
 - St Andrew's Healthcare
3. NHS Kernow total annual spend on mental health services was as follows;

Year	£'000
2013/14	113143
2014/15	105569
2015/16	109097
2016/17	108260
2017/18	99122*

*Based on current Programme budgeting workings 30/08/18 – work in progress

4. NHS Kernow's estimated planned spend for mental health services for the financial year 2018/19 based on the 2017/18 outturn as above is;

Year	£'000
2018/19	99122

5. The current numbers of beds commissioned are;
 - a. Acute mental beds commissioned – 93
 - b. Rehabilitation[1] mental health beds commissioned – 30
6. The past numbers of beds commissioned were;
 - a. Acute mental beds commissioned since 2013/14 – NHS Kernow does not hold this information in this level of detail but we believe the number to be very similar as the current 93 beds.
 - b. Rehabilitation mental health beds commissioned 2013/14 – 18
7. The rates paid per diem are variable and therefore NHS Kernow does not hold this information.
8. The rates paid per diem are variable and therefore NHS Kernow does not hold this information.

Attachment(s):

None

Date response sent:

20/09/2018

Individual funding requests

FOI 69240 Individual funding requests

Date request received:	06/08/2018	FOI ref:	69240
Requested information:			
<ol style="list-style-type: none">1. Do you have a list of treatments that the CCG does not routinely commission? If so, please can you provide this.2. Do you have a list of procedures of limited clinical value? If so, please can you provide this.3. If yes, of the procedures on this list, please name those that the CCG does not commission.4. How many individual funding requests has the CCG received in the last twelve months?5. How many individual funding requests have been approved?6. How many individual funding requests have been rejected?			
Response:			
<p>All of NHS Kernow's commissioning policies are available online; https://doclibrary-rcht.cornwall.nhs.uk/DocumentsLibrary/KernowCCG/IndividualFundingRequests/Policies/CommissioningPolicies.pdf.</p> <p>We have previously published our numbers of individual funding requests, these are available on our website; https://www.kernowccg.nhs.uk/get-info/information-governance/freedom-of-information-(foi)-requests/foi-disclosure-log/.</p>			
Attachment(s):			
None.			
Date response sent:			
06/08/2018			

Long term conditions

FOI 69710 Bariatric services

Date request received:	28/09/2018	FOI ref:	69710
Requested information:			
<ol style="list-style-type: none">1. What criteria do patients need to meet in order to be referred for bariatric surgery (tier 4 weight management) in your Clinical Commissioning Group (CCG) area?2. What criteria do patients need to meet in order to be referred for elective hernia repair in your Clinical Commissioning Group (CCG) area?			
Response:			
<p>All of NHS Kernow's treatment policies are available on our website; https://www.kernowccg.nhs.uk/get-info/treatment-policies/.</p>			
Attachment(s):			

None
Date response sent:
30/08/2018

FOI 69450 Facial palsy

Date request received:	15/08/2018	FOI ref:	69450
Requested information:			
<ol style="list-style-type: none"> 1. Of those with facial nerve palsy who have not made a full or nearly full recovery at 12 weeks following onset, can you provide an estimate of the percentage of such patients who are referred for rehabilitation of persistent facial pain/discomfort and dysfunction? 2. If a patient with facial nerve palsy is routinely referred to secondary care for rehabilitation therapy, which hospital(s) and department(s) do you refer to? 3. If routinely referring a patient with facial nerve palsy for therapy, do you refer to a specialist facial therapist or to a local general physiotherapy team? <ol style="list-style-type: none"> a. Do you have specific centres that you refer to? If so please indicate which ones. b. What is the average cost of a course of physical rehabilitation therapy? 4. Does the decision making panel for individual funding requests differentiate between referral to a specialist facial therapist (i.e. with a postgraduate qualification) and a general physiotherapist or speech and language therapist? 5. Is specialist physiotherapy or facial therapy freely available to patients with facial nerve palsy or is it funded on an individual basis? <ol style="list-style-type: none"> a. If not routinely funded, what is the reason? 6. How many individual funding requests have you received to access specialist physiotherapy or facial therapy in the last 12 months? <ol style="list-style-type: none"> a. How many were agreed? b. How many were declined? c. If declined, on what basis were they declined? 7. Is Trophic Electrical Stimulation (TES) freely available to patients with facial nerve palsy or is it funded on an individual basis? <ol style="list-style-type: none"> a. If routinely available, where do you refer patients to for TES? b. What evidence do you use to support routine funding of TES? c. If routinely available, what is the average cost of a course of TES? 			
Response:			
<ol style="list-style-type: none"> 1. As commissioners NHS Kernow does not hold this information. For more information please contact providers - Royal Cornwall Hospitals Trust, rch-tr.FOI@nhs.net, Cornwall Partnership NHS Foundation Trust (CFT), cpn-tr.freedomofinformation@nhs.net, University Hospitals Plymouth NHS Trust plh-tr.foi-requests@nhs.net and Northern Devon Healthcare NHS Trust https://www.northdevonhealth.nhs.uk/about/foi/form/. 2. Referrals to secondary care for facial nerve palsy are normally directed to the Neurology departments at Royal Cornwall Hospital University Hospital Plymouth and Northern Devon District Hospital for consultant Neurologist opinion. 3. Although as a commissioner we do not refer to services, our referral 			

guidelines will direct our patients with facial nerve palsy to local neurology departments.

For community referrals, referrals can be made to the Neuro-Rehabilitation and Stroke Therapy Team by Consultant, GPs, health and social care professionals or self-referral if the person is already known to the service. Depending on the nature of the therapy needed, some referrals may be made to the community Speech and Language Therapy Teams.

- a. Not applicable.
 - b. NHS Kernow does not hold this information. For more information please contact providers - Royal Cornwall Hospitals Trust, rch-tr.FOI@nhs.net, Cornwall Partnership NHS Foundation Trust (CFT), cpn-tr.freedomofinformation@nhs.net, University Hospitals Plymouth NHS Trust plh-tr.foi-requests@nhs.net and Northern Devon Healthcare NHS Trust <https://www.northdevonhealth.nhs.uk/about/foi/form/>.
4. NHS Kernow has received no applications received/issue not considered to date therefore this unknown. Services are provided via a number of services (see question 3) including speech and language therapists.
 5. Specialist physiotherapy is routinely commissioned via the services outlined in question 3.
 - a. Not applicable.
 6. NHS Kernow has received no individual funding requests for access to specialist physiotherapy or facial therapy in the last twelve months.
 - a. Not applicable.
 - b. Not applicable.
 - c. Not applicable.
 7. NHS Kernow does not routinely commission Trophic Electrical Stimulation (TES).
 - a. Not applicable.
 - b. Not applicable.
 - c. Not applicable.

Attachment(s):

None

Date response sent:

12/09/2018

FOI 69200 Migraine services

Date request received:	03/08/2018	FOI ref:	69200
Requested information:			
<ol style="list-style-type: none"> 1. What is the estimated prevalence of headache and migraine in the population of the CCG area? If not known or not collected please indicate. 2. Do you have a CCG pathway of care for patients with a primary headache disorder such as migraine publically available? If yes please share with your FOI response. 3. Do you have a CCG pathway of care for children and young people with headache and migraine? If yes please share with your FOI response. 4. Does the CCG currently commission services lead by a headache/migraine specialist to support adults with headache/migraine? 			

5. Does the CCG currently commission services lead by a headache/migraine specialist to support and young people with headache/migraine
6. If yes to Q4 or Q5 "If the answer is yes to either or both of the previous questions in this section, please detail the following:
 - a. Where the specialist service is delivered (Primary care, secondary care or tertiary care)
 - b. The lead health professional for the service. name, job role etc.
 - c. The address for the headache/migraine service(s)?
 - d. Does the service include a specialist Botox clinic for patients with chronic migraine?
7. If no to Q4 or Q5 "If the answer is no to either or both of the previous questions in this section, please detail the following:
 - a. Alternative commissioning arrangement e.g. STP level commissioning
 - b. Provision of specialist services available for patients with headache and migraine e.g. general neurology, out of area referral etc.
8. Is Botox listed on the CCG formulary for use in the treatment of chronic migraine?
9. Does neurology and/or headache and migraine feature as a commissioning priority for the CCG in the 2018-2020 and/or 2020-2022 cycle?
10. Please provide details of the CCG planning cycle.
11. Is the CCG operating as part of an STP? If yes please provide the name and catchment area of the STP?
12. Please provide the name and email address of the lead for neurology/headache service delivery/redesign within the CCG and/or STP.

Response:

1. NHS Kernow does not hold data on the estimated prevalence of headaches and migraines in the area.
2. Referral pathways and guidelines can be found on our website; http://rms.kernowccg.nhs.uk/rms/primary_care_clinical_referral_criteria/rms/primary_care_clinical_referral_criteria/neurology/migraine, http://rms.kernowccg.nhs.uk/rms/primary_care_clinical_referral_criteria/rms/primary_care_clinical_referral_criteria/neurology/tension_headache.
3. Referral pathways and guidelines can be found on our website; http://rms.kernowccg.nhs.uk/rms/primary_care_clinical_referral_criteria/rms/primary_care_clinical_referral_criteria/neurology/migraine, http://rms.kernowccg.nhs.uk/rms/primary_care_clinical_referral_criteria/rms/primary_care_clinical_referral_criteria/neurology/tension_headache.
4. NHS Kernow commissions neurology services which includes headache/migraine services.
5. NHS Kernow commissions neurology services which includes headache/migraine services.
6.
 - a. Neurology services are delivered by secondary care.
 - b. Neurology services are part of the Medical Division at Royal Cornwall Hospital Trust and the Specialty lead is Dr Jonathan Stewart.
 - c. Royal Cornwall Hospital Trust, Treliske, Truro TR1 3LQ
 - d. NHS Kernow does not hold the information requested, for more information please contact the provider - Royal Cornwall Hospitals Trust, rch-tr.FOI@nhs.net
7. Not applicable.

8. Botox is listed on our formulary; https://www.eclipsesolutions.org/cornwall/ .
9. No, not at the time of response.
10. NHS Kernow publish its annual commissioning intentions by 30th September each year.
11. NHS Kernow is part of the Shaping our Future, Cornwall and Isles of Scilly STP, https://www.shapingourfuture.info/ .
12. The director responsible for neurology/headache service delivery/redesign with NHS Kernow is Wasique Chaudhry (wasiquechaudhry@nhs.net).
Attachment(s):
None
Date response sent:
15/08/2018

FOI 69800 Wheelchair service

Date request received:	30/08/2018	FOI ref:	69800
Requested information:			
<p>Where the recipient of this request is a CSU covering multiple CCGs, I would like a response for each CCG whose FOI functions are handled by the CSU, with each CCG treated as a separate public body for section 12 purposes.</p> <p>If the providers of NHS Wheelchair Services are different for adults and children, please provide information for both.</p> <ol style="list-style-type: none"> 1. The name of the current provider of NHS Wheelchair Services in the CCG area; when they started providing this service in the CCG area; and when their current contract runs until 2. The name of the previous provider of NHS Wheelchair Services in the CCG area 3. The current eligibility criteria for receiving NHS-funded wheelchairs via NHS Wheelchair Services in the CCG area 4. A list of all changes to the eligibility criteria for receiving NHS-funded wheelchairs via NHS Wheelchair Services in the CCG area, where those changes were implemented after April 1st 2015; please state not just the new criteria in each case, but also the old criteria that was altered by the change (e.g. 'inability to walk 20m unaided' replacing 'inability to walk 40m unaided') 5. For each change listed in response to question 4, please provide details of any public consultation that was carried out on the change; whether any measures to publicise the consultation were undertaken beyond posting it online; and what responses were received to any such consultation 6. A list of any changes to the eligibility criteria for receiving NHS-funded wheelchairs via NHS Wheelchair Services in the CCG area that are currently being considered, proposed or consulted on. 			
Response:			
<ol style="list-style-type: none"> 1. NHS Kernow has previously answered this question and the answers are available on our Disclosure Log on our website; https://doclibrary-kccg.cornwall.nhs.uk/DocumentsLibrary/KernowCCG/ManagingInformation/FOIRequests/201819/NHSKernowFOIsJuly2018.pdf. 2. NHS Kernow's wheelchair provides have been unchanged since its formation 			

on 1st April 2013.

3. Please see attached current eligibility criteria for children and adults.
4. Please see the documents attached showing previous criteria & document showing changes and impact to criteria.
5. The changes to the referral criteria were undertaken as a planned routine review of the criteria. No public consultation is documented.
6. There are no changes currently proposed.

Attachment(s):



Date response sent:

20/09/2018

Mental health and learning disabilities

FOI 69550 Mental health services

Date request received:	17/08/2018	FOI ref:	69550
Requested information:			
<p>I would like to make an enquiry about the LD Services for the CCG. The questions and details for the same are mentioned below, Please disclose, in line with the Transforming Care programme and associated service models and specifications, whether your CCG has:</p> <ol style="list-style-type: none">1. Enhanced/intensive community support services for children with a learning disability and/or autism who display challenging behaviour, yes or no;2. Enhanced/intensive community support services for adults with a learning disability and/or autism who display challenging behaviour, yes or no;3. Specialist community-based forensic services for children with a learning disability and/or autism who display challenging behaviour, yes or no;4. Specialist community-based forensic services for adults with a learning disability and/or autism who display challenging behaviour, yes or no;5. Alternative short-term accommodation for LD patients in crisis or potential crisis to avoid admission into a hospital setting, yes or no;6. Acute learning disability inpatient services including the number of beds and whether they are in a dedicated specialist unit or existing mainstream inpatient services.			
Response:			
<ol style="list-style-type: none">1. No – there is an LD CAMHS service that provides intensive intervention but this is only for those with severe and profound learning disabilities and co-morbid mental health need.2. NHS Kernow has enhanced/intensive community support services for adults with a learning disability and/or autism who display challenging behaviour.3. No – however there is a jointly delivered CAMHS and Council service for those with sexually harmful behaviour, which includes those with learning			

<p>disabilities and autism spectrum disorder. Cornwall Council https://www.cornwall.gov.uk/council-and-democracy/data-protection-and-freedom-of-information/freedom-of-information-advice/freedom-of-information-foi-online-request-form/ and Cornwall Partnership NHS Foundation Trust (CFT), cpn-tr.freedomofinformation@nhs.net may hold more information.</p> <p>4. NHS Kernow has specialist community-based forensic services for adults with a learning disability and/or autism who display challenging behaviour.</p> <p>5. NHS Kernow does not have alternative short-term accommodation for LD patients in crisis or potential crisis to avoid admission into a hospital setting.</p> <p>6. NHS Kernow does not have acute learning disability inpatient services.</p>
Attachment(s):
None
Date response sent:
14/09/2018

FOI 69730 Mental health spend

Date request received:	29/08/2018	FOI ref:	69730
Requested information:			
<p>9. Can you please provide the name(s) of NHS providers you commission mental health inpatient beds from?</p> <p>10. Can you please provide the name(s) of non-NHS providers you commission mental health inpatient beds from?</p> <p>11. What was your total annual spend on mental health services for the financial years 2013/14 to 2017/18</p> <p>12. What is your planned spend for mental health services for the financial year, 2018/19?</p> <p>13. Can you please provide the current number of: (please indicate the year this information refers to)</p> <ul style="list-style-type: none"> a. Acute mental beds commissioned b. Rehabilitation[1] mental health beds commissioned <p>14. Can you please provide the past number of:</p> <ul style="list-style-type: none"> a. Acute mental beds commissioned since 2013/14 b. Rehabilitation mental health beds commissioned 2013/14 <p>15. Can you please provide information on the current per diem price paid for: (please indicate the year this information refers to)</p> <ul style="list-style-type: none"> a. Acute mental health beds provided by NHS providers b. Acute mental health beds provided by non-NHS providers c. Rehabilitation mental health beds provided by NHS providers d. Rehabilitation mental health beds provided by non-NHS providers <p>16. Can you please provide information on the per diem price paid for:</p> <ul style="list-style-type: none"> a. Acute mental health beds provided by NHS providers for each financial year since 2013/14 b. Acute mental health beds provided by non-NHS providers for each financial year since 2013/14 c. Rehabilitation mental health beds provided by NHS providers for each financial year since 2013/14 d. Rehabilitation mental health beds provided by non-NHS providers for 			

each financial year since 2013/14

Response:

9. NHS Kernow commissions mental health inpatient beds from the following NHS providers;
- Cornwall Partnership NHS Foundation Trust
 - Devon Partnership NHS Trust
10. NHS Kernow commissions mental health inpatient beds from the following non-NHS providers;
- Cygnet Healthcare Ltd
 - Elysium Healthcare Ltd
 - Rushcliffe Independent Hospital
 - Priory Group Ltd
 - LS Healthcare
 - St Andrew's Healthcare
11. NHS Kernow total annual spend on mental health services was as follows;

Year	£'000
2013/14	113143
2014/15	105569
2015/16	109097
2016/17	108260
2017/18	99122*

*Based on current Programme budgeting workings 30/08/18 – work in progress

12. NHS Kernow's estimated planned spend for mental health services for the financial year 2018/19 based on the 2017/18 outturn as above is;

Year	£'000
2018/19	99122

13. The current numbers of beds commissioned are;
- a. Acute mental beds commissioned – 93
 - b. Rehabilitation[1] mental health beds commissioned – 30
14. The past numbers of beds commissioned were;
- a. Acute mental beds commissioned since 2013/14 – NHS Kernow does not hold this information in this level of detail but we believe the number to be very similar as the current 93 beds.
 - b. Rehabilitation mental health beds commissioned 2013/14 – 18
15. The rates paid per diem are variable and therefore NHS Kernow does not hold this information.
16. The rates paid per diem are variable and therefore NHS Kernow does not hold this information.

Attachment(s):

None

Date response sent:

20/09/2018

FOI 69270 Mental health spend

Date request	07/08/2018	FOI ref:	69270
---------------------	------------	-----------------	-------

received:

Requested information:

1. What was your total spend on all mental health, learning disability and dementia services in 2017/18?
2. What is your total planned spend on all mental health, learning disability and dementia services in 2018/19?
3. Please breakdown the total spend figures in Q1 and Q2 as follows:

CCG Spend on Mental Health, Learning Disability and Dementia Services	2017/18		2018/19	
	£000s	%	£000s	%
NHS Providers: *				
Non-NHS Providers: **				
Other (please specify): ***				
Total spend				

* Please list all NHS providers and show CAMHS providers separately.

** Please list all Non-NHS providers and show CAMHS providers separately. List to include local authorities, private and voluntary sector.

*** Please list any other organisation providing services not listed above.

Response:

Please note NHS Kernow is not able to provide the breakdown for CAMHS providers – as to collate this information would exceed the time allowed under section 12 of the Freedom of Information Act 2000.

These figures listed below only include direct spend on mental health and learning disabilities, they do not include prescribing and continuing healthcare.

NHS Kernow’s forecast spend for mental health and learning disabilities for 2018/19 is £92,285,000. Some investments in 2018/19 are still in the process of being finalised and so the complete detailed breakdown is not available at this time.

The detailed breakdown of expenditure for 2017/18 is shown in the table overleaf.

CCG Spend on Mental Health, Learning Disability and Dementia Services	2017/18	
NHS Providers	£	%
Foundation Trusts		
2gether NHS Foundation Trust	£3,218.12	0.003562%

Berkshire Healthcare NHS Foundation Trust	£3,199.57	0.003542%
Birmingham and Solihull Mental Health NHS Foundation Trust	£1,092.00	0.001209%
Black Country Partnership Nhs Foundation Trust	£1,386.57	0.001535%
Cambridgeshire and Peterborough NHS Foundation Trust	£187.18	0.000207%
Camden and Islington NHS Foundation Trust	£4,317.74	0.004779%
Central and North West London NHS Foundation Trust	£16,374.92	0.018126%
Cornwall Partnership NHS Foundation Trust	£63,007,640.34	69.744227%
Derbyshire Healthcare NHS Foundation Trust	£2,626.06	0.002907%
Dorset Healthcare NHS Foundation Trust	£1,195.90	0.001324%
East London NHS Foundation Trust	£10,985.70	0.012160%
ESSEX PARTNERSHIP UNIVERSITY NHS FT	£387.07	0.000428%
General NCA Accrual Foundation Trust	£36,771.24	0.040703%
Greater Manchester Mental Health NHS Foundation Trust	£1,851.27	0.002049%
Hertfordshire Partnership NHS Foundation Trust	£267.65	0.000296%
Humber NHS Foundation Trust	£404.64	0.000448%
Lancashire Care NHS Foundation Trust	£9,642.65	0.010674%
Leeds & York Partnerships NHS Foundation Trust	£2,169.72	0.002402%
Lincolnshire Partnership NHS Foundation Trust	£262.00	0.000290%
Norfolk and Suffolk Foundation Trust	£819.00	0.000907%
North East London NHS Foundation Trust	-£375.49	-0.000416%
Northamptonshire Healthcare NHS Foundation Trust	£9,905.07	0.010964%
Northumberland, Tyne & Wear NHS Foundation Trust	£822.76	0.000911%
OXFORD UNIVERSITY HOSPITALS NHS FOUNDATION TRUST	£1,982.42	0.002194%
Pennine Care NHS Foundation Trust	£623.78	0.000690%
Royal Papworth Hospital NHS Foundation Trust	£25.00	0.000028%
Sheffield Health and Social Care NHS Foundation Trust	£1,737.00	0.001923%
Somerset Partnership NHS Foundation Trust	£141,769.63	0.156927%

South London and Maudsley NHS Foundation Trust	£25,197.00	0.027891%
South Staffordshire and Shropshire Healthcare NHS Foundation Trust	£3,627.15	0.004015%
South West Yorkshire Partnership NHS foundation trust	£573.61	0.000635%
Southern Health NHS Foundation Trust	£23,172.60	0.025650%
Surrey and Borders Partnership NHS Foundation Trust	£5,158.85	0.005710%
Sussex Partnership NHS Foundation Trust	£1,065.00	0.001179%
Tees Esk and Wear Valleys NHS Foundation Trust	£218.00	0.000241%
NHS Trusts		
Avon and Wiltshire Mental Health Partner NFT	£40,245.76	0.044549%
Coventry and Warwickshire Partnership NHS Trust	£487.95	0.000540%
Devon Partnership NFT	£704,133.72	0.779418%
Dudley and Walsall Mental Health Partnership NHS Trust	£868.32	0.000961%
General NCA Accrual NHS Trust	£25,000.00	0.027673%
Kent and Medway NHS and Social Care Partnership Trust	£6,508.00	0.007204%
Leicestershire Partnership NFT	£3,935.27	0.004356%
North Staffordshire Combined Healthcare NFT	£347.98	0.000385%
Royal Cornwall Hospitals NFT	£56,690.94	0.062752%
South West London and St George's Mental NFT	£3,402.69	0.003766%
Staffordshire and Stoke on Trent Partnership NHS Trust	£368.00	0.000407%
The Solent NHS Trust	£5,049.09	0.005589%
West London Mental Health NFT	£2,974.72	0.003293%
Worcestershire Health and Care NHS Trust	£1,528.00	0.001691%
Miscellaneous Non NHS Providers	£4,826,053.54	5.342041%
Isles of Scilly (Council of the)	£15,000.00	0.016604%
CYGNET HEALTHCARE LTD	£1,102,798.46	1.220706%
PETROC GROUP PRACTICE,THE SURGERY,TREKENNING ROAD,ST.COLUMB MAJOR,CORNWALL,TR9 6RR	£5,000.00	0.005535%
THE SURGERY,RIVER STREET, MEVAGISSEY,ST AUSTELL,CORNWALL,PL26 6UE	£15,000.00	0.016604%
FOUR SEASONS HEALTH CARE LTD	£18,594.55	0.020583%

NAVIGO	£365.00	0.000404%
PRIORY GROUP LTD	£16,916.04	0.018725%
REGARD PARTNERSHIP LTD	£210,660.80	0.233184%
PENTREATH LTD	£620,270.64	0.686588%
UNITED RESPONSE	£645,811.01	0.714859%
SCOPE	£28,679.72	0.031746%
ELYSIUM HEALTHCARE LTD	£99,489.28	0.110126%
LIVEWELL SOUTHWEST	£38,699.52	0.042837%
RE GAIN (CORNWALL) CIC LTD	£140,698.00	0.155741%
OUTLOOK SOUTH WEST	£4,706,410.67	5.209606%
GREEN LIGHT PBS LTD	£590,951.24	0.654134%
BARCHESTER HEALTHCARE LTD	£1,239,090.66	1.371571%
Betsi Cadwaladr University LHB	£500.00	0.000553%
Cornwall Unitary Authority	£3,898,161.58	4.314941%
PARTNERSHIPS IN CARE LTD	£619,372.79	0.685594%
MODUS CARE LTD	£237,419.52	0.262804%
BRISTOL PRIORY	£215,127.00	0.238128%
PRIVATE CARE HOME	£3,831,499.76	4.241152%
NHS SOUTH, CENTRAL AND WEST CSU	£2,230.00	0.002468%
CHARITY	£1,202,086.88	1.330610%
COMMUNITY INTEREST COMPANY	£24,000.00	0.026566%
PRIVATE HEALTHCARE	£1,949,282.37	2.157694%
Additional funding from NHS ENGLAND	-£131,000.00	-0.145006%
Total spend	£90,341,011.19	
Attachment(s):		
None		
Date response sent:		
04/09/2018		

Organisation

FOI 69620 Consultant spend

Date request received:	20/08/2018	FOI ref:	69620
Requested information:			
In each of the past 6 years (Calendar or Tax Year) how much has the NHS in Cornwall spent on outside advisors and consultants?			
Could you supply the names of each of these companies, their remit and the cost of the contract awarded to each in each of the relevant years?			
Response:			

Please see below table detailing NHS Kernow's spent on outside advisors and consultants;

Year	Total expenditure on external advisors and consultants	Companies	Remit	Cost
	£'000			
2017/18	6	Sue Miller Consulting Ltd	External HR	£5,760
2016/17	307	Pam Smith Ltd	Primary Care	£6,599
		Numbers for Good	Strategy	£1,319
		PricewaterhouseCooper LLP	Strategy	£191,355
		Finnamore Consulting	Strategy	£98,906
		Cornwall Council	External HR	£9,190
2015/16	221	Sea Change Cornwall	Strategy	£4,279
		Brookward Consulting	Strategy	£22,346
		E-Qipp Consulting	Programme and Project Management	£13,870
		Joules Energy Efficiency Services Ltd	Strategy	£2,424
		Age UK Cornwall & IOS	Strategy	£73,713
		Richard Mindel Associates	Organisation and Change Management	£15,246
		Quaicus Limited	Organisation and Change Management	£5,841
		Cell Consulting Ltd	Finance	£28,147
		Ian Tipney Consultancy	Finance	£17,297
		Sara Coles Ltd	Strategy	£3,795
		Numbers for Good	Strategy	£30,788
		Pam Smith Ltd	Primary Care	£3,750
		2014/15	625	Sea Change Cornwall
Brookward Consulting	Strategy			£54,376
E-Qipp Consulting	Programme and Project Management			£130,491
Joules Energy Efficiency Services Ltd	Strategy			£25,532
Age UK Cornwall & IOS	Strategy			£58,511

		Richard Mindel Associates	Organisation and Change Management	£30,860
		Quaicus Limited	Organisation and Change Management	£12,334
		Charis Consultants Ltd	Organisation and Change Management	£12,226
		Octarine Management Solutions	Programme management	£2,471
		Cell Consulting Ltd	Finance	£72,367
		Ian Tipney Consultancy	Finance	£52,286
		Social Finance Limited	IT/IS	£6,420
		Sara Coles Ltd	Strategy	£45,719
		Delloitte	Finance/Strategy	£81,732
2013/14	223	Qaicus Ltd	Support on Strategic Influencing and Communication	£19,900
		Richard Mindel Associates	KCCG Organisational Development	£54,750
		AGE UK	Support on Integration work	£37,424
		Blaise Mallon Consultancy	Estates transitional issues	£8,500
		Joules Energy Efficiency Services	KCCG Organisational Development	£23,120
		Octarine Management Solutions Ltd	Programme management	£35,750
		Method Consulting	Challenge Pack on metrics	£29,650
		Sheephouse Consulting	Data analysis work on bed and capacity modelling	£8,712
		Connect Internet Solutions	Website consultancy services	£4,838
Attachment(s):				
None				
Date response sent:				
11/09/2018				

Prescribing and pharmacies

FOI 69220 Wound care products

Date request received:	06/08/2018	FOI ref:	69220
-------------------------------	------------	-----------------	-------

Requested information:
In accordance with the Freedom of Information Act please state which supply route your organisation currently uses to procure wound care dressings – a) FP10 b) online non-prescription ordering service (ONPOS), c) NHS Supply Chain, d) Amcare Group, e) Other [please specify]. Please state when your Wound Care formulary first adopted your current supply route.
Response:
NHS Kernow has used Amcare since 1 st April 2017.
Attachment(s):
None
Date response sent:
30/08/2018

Properties and estates

FOI 69600 Strategic estates plan

Date request received:	20/08/2018	FOI ref:	69600
Requested information:			
<p>I am writing to ask for copies of documents which you hold: the NHS Kernow CCG Local Estates Strategy and the Cornwall and Isles of Scilly Strategic Outline case.</p> <p>You have previously refused disclosure of these documents on the grounds that they were at that time in only draft form. The documents are now nearly two years old and still have no publication date. I am therefore minded to challenge your refusal to disclose with the Information Commissioner.</p> <ol style="list-style-type: none"> 1. Can you please tell me the intended publication date of these documents? 2. What is the workflow which informs who will see these documents, which senior officers will see them in draft form, and when will they see them? 3. When was Capita appointed to write the Local Estates Strategy, and by whom? 4. Why was the decision to appoint Capita not reported publicly? 5. What is the total value of the Capita contract in respect of the Local Estates Strategy? 6. When was Kajima appointed to write the Strategic Outline Case, and by whom? 7. Why was the decision to appoint Kajima not reported publicly? 8. What is the total value of the Kajima contract in respect of the Strategic Outline Case? 			
Response:			
<ol style="list-style-type: none"> 1. We do not currently have an agreed publication date. Ultimately the estates strategy will be informed and finalised once the system model of care and clinical strategy have been agreed. 2. The Cornwall and Isles of Silly Shaping Our Future Strategic Estates Group 			

oversees the production of the system estates strategy although NHS constituent organisations' boards / Governing Body, as STP sponsors, will ultimately approve the documents. The final version will be presented to the Shaping Our Future Transformation Board in due course.

3. Capita was appointed to develop a Local Estates Strategy during 2015/16. The appointment was not made directly by the local NHS but was conducted through Community Health Partnerships Ltd (CHP), a wholly owned subsidiary of the Department of Health and Social Care. Part of CHP's role includes the provision of strategic estate advice and support to local health systems.
4. As noted above, the appointment was not made directly by a local NHS body; therefore NHS Kernow does not hold this information, please contact Community Health Partnerships Ltd foi@communityhealthpartnerships.co.uk, which may hold more information.
5. The total value of the contract with Capita was £75,740. The Cornwall and Isles of Scilly NHS funded £20,000 of this total.
6. March 2017 and approved by the Shaping Our Future Executive Delivery Group with the Strategic Estates Group providing estates data.
7. There is not a requirement within the appointing organisations standing orders to publish the appointment of contractors at this value publically.
8. The cost of the work was £6,000 and it was funded from the One Public Estate Grant.

Attachment(s):

None

Date response sent:

14/09/2018

Public health

FOI 69390 Health apps

Date request received:	13/08/20018	FOI ref:	69390
Requested information:			
<ol style="list-style-type: none"> 1. Within the last 12 months, has the CCG / GPs recommended any mobile healthcare apps? <ol style="list-style-type: none"> a. Yes (if yes, go to Q2) b. No (if no, please end your response here) 2. How have the apps that have been recommended been identified / sourced? (advise all which apply) <ol style="list-style-type: none"> a. Browsing app store b. Used by other CCG c. NHS App Library d. Developed in-house e. Other (please provide detail) 3. Where mobile healthcare apps are recommended, how does the CCG / GPs in your area procure them? (advise all which apply) 			

<ul style="list-style-type: none"> a. Purchase licences in advance of recommendation to patients b. Pays retrospectively for recommended and downloaded apps c. Other (please provide detail) <p>4. Where mobile healthcare apps are recommended, how does the CCG track their deployment? (advise all which apply)</p> <ul style="list-style-type: none"> a. Manually tracked through a paper based system b. Automatically through a digital based system using a code c. Patients pay for apps themselves d. Other (please provide detail) <p>5. Please provide a list of the names of any mobile healthcare apps the CCG has recommended within the last 12 months.</p> <p>6. How much has the CCG / GPs in your area spent on recommending mobile healthcare apps in: (advise figures in £)</p> <ul style="list-style-type: none"> a. The current financial year to date (April 2018 – July 2018) b. The previous financial year (April 2017 – March 2018)
Response:
NHS Kernow has not recommended any mobile healthcare apps in the last 12 months.
Attachment(s):
None
Date response sent:
30/08/2018

FOI 69650 Out of hours services

Date request received:	21/08/2018	FOI ref:	69650
Requested information:			
<ul style="list-style-type: none"> 1. Has your CCG(s) implemented direct booking of in-hours GP appointments from NHS 111? 2. What percentage of callers to NHS 111 are given the option of booking an in-hours GP appointment? 3. What percentage of the callers that are offered the option of booking an in-hours GP appointment take up the offer? 4. How many GP appointments in your CCG(s) are reserved for NHS 111 direct booking? 5. Of the in-hours GP appointments that are reserved for NHS 111, how many are booked through the direct booking service? 			
Response:			
<ul style="list-style-type: none"> 1. NHS Kernow has not implemented direct booking of in-hours GP appointments from NHS 111. 2. Not applicable. 3. Not applicable. 4. Not applicable. 5. Not applicable. 			
Attachment(s):			
None			
Date response sent:			

Referral management

FOI 69540 RMS information

Date request received:	16/08/2018	FOI ref:	69540
Requested information:			
Does each CCG have an existing RMS (Referral Management Service)			
If they do please could you include within the response			
<ol style="list-style-type: none"> 1. Who is the existing provider 2. Length of existing contract 3. What specialty does the RMS contract cover – ENT, Gynae etc 4. Date you are looking to re-commission the contract 			
Response:			
<ol style="list-style-type: none"> 1. NHS Kernow operates two referral management centres. NHS Kernow has a Referral Management Service (RMS) which serves 53 GP Practices in Cornwall, excluding practices in East Cornwall. NHS Kernow commissions a separate RMS to manage the 11 Practices in East Cornwall. This contract is with NEW Devon CCG, Devon Referral Support Services (DRSS). 2. The DRSS current contract end date is 31st March 2019. 3. RMS and DRSS cover the following specialties; 			
DRSS		RMS	
2WW Allergy Cardiology Children's & Adolescent Services Dentistry and Orthodontics Dermatology Diabetic Medicine Diagnostic Endoscopy Diagnostic Imaging Diagnostic Physiological Measurement Ear, Nose & Throat Endocrinology and Metabolic Medicine General Medicine Geriatric Medicine GI and Liver (Medicine and Surgery) Gynaecology Haematology Health Promotion Immunology Nephrology Neurology		Allergy Cardiology Children's & Adolescent Services Dentistry and Orthodontics Dermatology Diabetic Medicine Diagnostic Endoscopy Diagnostic Imaging Diagnostic Physiological Measurement Ear, Nose & Throat Endocrinology and Metabolic Medicine General Medicine Geriatric Medicine GI and Liver (Medicine and Surgery) Gynaecology Haematology Immunology Nephrology Neurology Neurosurgery Ophthalmology	

Neurosurgery Ophthalmology Oral and Maxillofacial Surgery Orthopaedics Pain Management Podiatry Respiratory Medicine Rheumatology Sleep Medicine Surgery - Breast Surgery - Not Otherwise Specified Surgery - Plastic Surgery - Vascular Urology	Oral and Maxillofacial Surgery Orthopaedics Pain Management Podiatry Respiratory Medicine Rheumatology Sleep Medicine Surgery - Breast Surgery - Not Otherwise Specified Surgery - Plastic Surgery - Vascular Termination of pregnancy Urology
4. At present NHS Kernow has not agreed a date to re-commission the contract. All contract opportunities with NHS Kernow are advertised on EU Supply is https://uk.eu-supply.com/login.asp?B=NHSSW .	
Attachment(s):	
None	
Date response sent:	
31/08/2018	

FOI 69150 Ophthalmology services

Date request received:	02/08/2018	FOI ref:	69150
Requested information:			
<ol style="list-style-type: none"> The number of cataract surgeries performed in the Clinical Commissioning Group area in the year 2015, the year 2016 and the year 2017. The number of cataract surgeries scheduled to be performed in the Clinical Commissioning Group area in the year 2018 and the year 2019. 			
Response:			
<ol style="list-style-type: none"> The following numbers of cataract surgeries were performed in NHS Kernow's area; We hold this data in financial years as per below: <ol style="list-style-type: none"> 2015/16 – 4670 2016/17 – 5459 2017/18 – 4474 The following numbers of cataract surgeries are planned; <ol style="list-style-type: none"> 2018/19 – 4519, NHS Kernow's indicative activity plans are based on the previous year's out-turn plus population growth (1%), 2019/20 – planning assumptions and indicative activity planning for the year 19/20 are yet to commence 			
Attachment(s):			
None			
Date response sent:			
13/08/2018			

Urgent care

FOI 69210 Urgent care contacts

Date request received:	06/08/2018	FOI ref:	69210
Requested information:			
<p>This question is about the proposed Urgent Treatment Centres in Cornwall.</p> <p>Please provide me with a copy of "the travel time analysis for each site to determine accessibility by private and public transport during peak and off peak times" - this is referenced in Jackie Pendleton's and Helen Charlesworth-May's paper to the Shaping Our Future Transformation Board meeting scheduled for Wednesday 8th August 2018. Because of the joint authorship of this paper, it must be held by both KCCG and Cornwall Council.</p> <p>Who has carried out this analysis, and when was this work done? If the work has been undertaken by consultants, how much did it cost?</p>			
Response:			
<p>Travel time analysis is the analysis of the time taken from one point (the origin) to another (the destination).</p> <p>The South West Academic Health Science Network (SWASHN) and the Cornwall Council Geographical Information System team were asked to develop a travel time methodology for use by the Shaping our Future programme.</p> <p>The methodology has been reviewed and signed off.</p> <p>This information will inform, but not in isolation determine, the options for the future configuration of urgent treatment centres, minor injury units and other minor injury services. The analysis provides a more detailed understanding about how easy or difficult it is for people to reach the services they need.</p> <p>SWASHN used TRACC software from Basemap Ltd to calculate travel times. Basemap Ltd is the market leader in calculating travel distances and times and manage many of the UK's leading travel calculation databases. TRACC calculates the journey travel time between an origin point and destination address for public transport, walking, cycling and car drive time, using public transport and highways data. The journey times can also be for calculated for different time periods including off-peak, peak, weekdays and weekends.</p> <p>The public transport calculation is based on data available from the National Public Transport Data Repository (NPTDR) and is freely available to everyone at data.gov.uk. It provides a quarterly snapshot of timetable information for bus, ferry, national rail, tube, cable car, tram, light rail and coach services in the UK and calculates travel time by finding all available routes using public transport including a</p>			

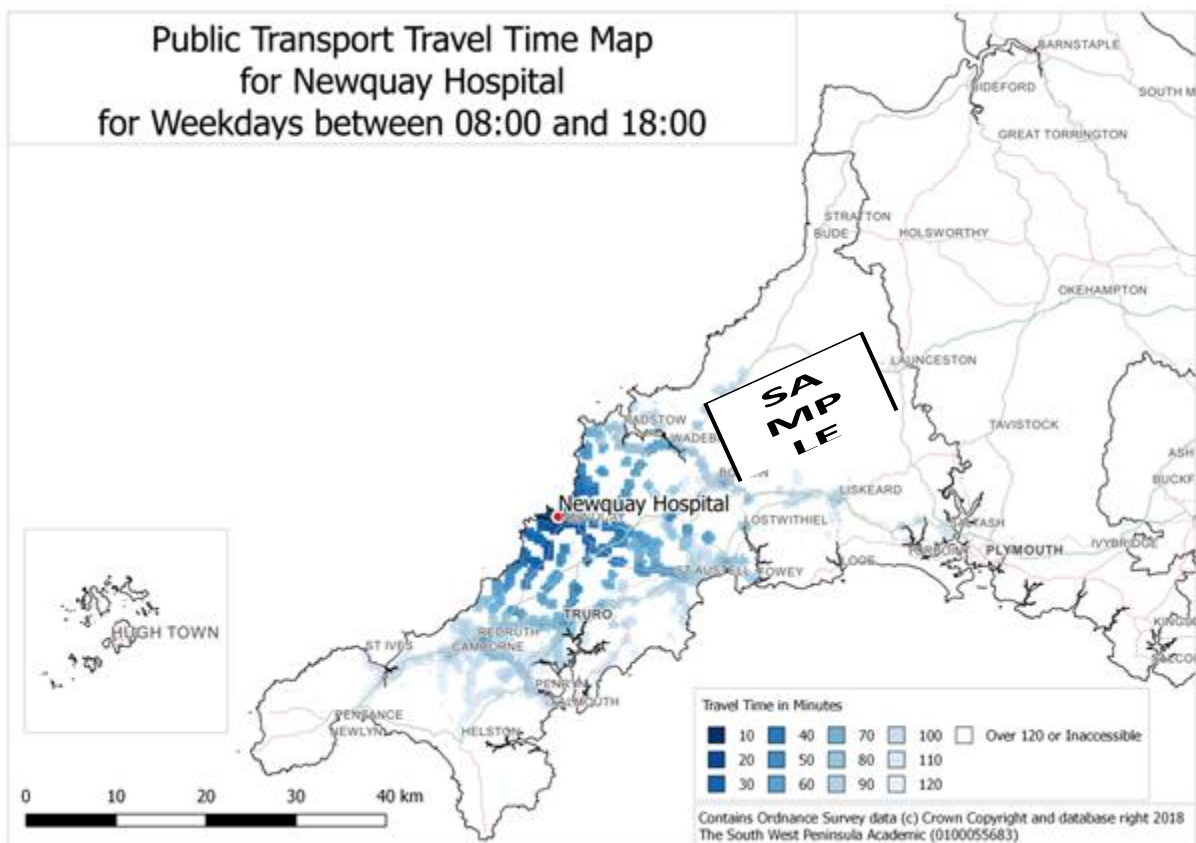
mix of different modes such as bus, train, bus. It also takes into account any walking required between modes.

For walking, cycling and car calculations TRACC will find all the available routes on the road network to travel from the origin to the destination and (depending on the calculation settings) will return the shortest distance or the quickest journey time. Car, cycle or walk-only journeys are similar to the public transport calculation except that once the road network is reached the journey proceeds link by link at pre-determined speeds. Journey times by car were calculated based on default Department for Transport (DfT) speeds using real time GPS data and takes into account the type of road people are travelling on.

For any site in question, the SW AHSN is able to produce colour-coded maps showing travel times by banding for the population of Cornwall:

- By car during peak times
- By car during off-peak
- By public transport on weekdays
- By public transport on weekends

A sample is provided below, please note that specific maps for each site as per your request have not been produced;



Additionally graphs can also be prepared for the above four categories of transport type and time which show the number of people who can access the site by time band (e.g. within 30 minutes, 60 minutes and so on).

No costs were associated with the production of this methodology.

Attachment(s):
None
Date response sent:
03/09/2018
